

MINI2



WORLD'S MOST ACCURATE & FASTEST OTDR

- The World's Fastest Booting Time
- SOLA, Simplify The OTDR Test Process
- 5" Touch Screen with Smart GUI
- 8GB Internal Storage with Internal SD Card & External USB Memory
- Built-In VFL and Light Source
- Very Light Weight and Hand-held



BELIEVE
YOUR
EYES.

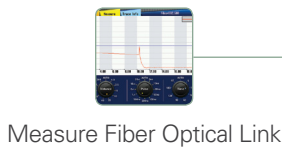
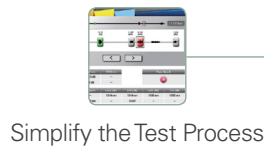
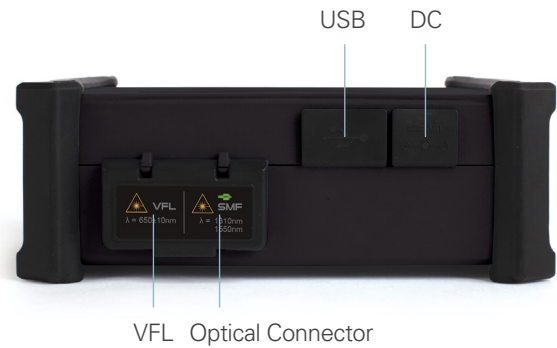
DESCRIPTION

The MINI2 OTDR is used in the installation and maintenance of fiber optic cables. Features of the MINI2 OTDR include high precision test capabilities, fast response times, and easy to learn operation. The multi-point capacitive touch screen allows for user-friendly operation. The MINI2 OTDR offers accurate and fast test results and creates a report automatically. The MINI2 OTDR is compactly designed and very lightweight and hand-held.

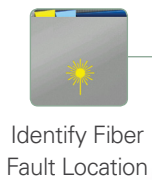
CHARACTERISTICS



The World's Fastest Booting Time

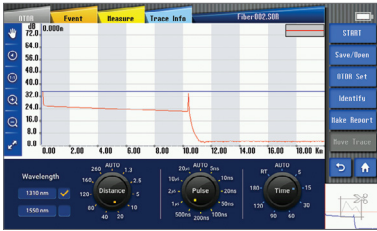


5" Touch Screen with Smart GUI
High Brightness
Resolution of 800x480



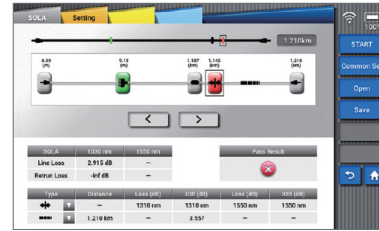
Provide the Powerful File Management

OTDR



OTDR mode allows for measuring distance, loss, reflectivity, attenuation and accumulation loss on a fiber optical link.

SOLA



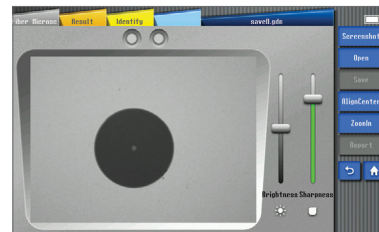
SOLA is an application for the OTDR, designed to simplify OTDR test process without the need to configure the parameters or analysis while parsing multiple complex OTDR curves.

VFL



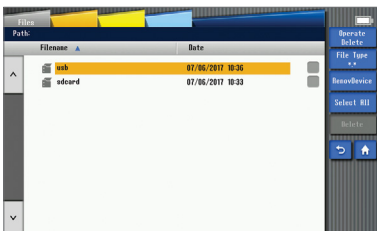
VFL allows for finding direct fault locations in fiber test dead zones or performing fiber core calibration in multi-fiber cables.

FIBER MICROSCOPE



Fiber end tester (peripheral required) is mainly used to test the cleanliness and flatness of the fiber end face.

FILE MANGER



File Manger can provide powerful file management that users can manage their files conveniently.

LIGHT SOURCE



Invisible light source (1310 or 1550nm) can provide the following types of light, including CW light, 1kHz light, 2kHz light, 1kHz blink light, 2kHz blink light.

TECHNICAL SPECIFICATIONS

Model	MINI2
Display	5 inches, High Brightness TFT LCD, resolution of 800x480
Distance unit	m / km / mile
Dynamic range	1310nm / 1550nm, 32dB / 30dB
Measurement range (km)	1.3, 2.5, 5, 10, 20, 40, 80, 120, 160, 360km
Measurement range (mile)	0.81, 1.55, 3.11, 6.22, 12.4, 24.8, 49.6, 74.6, 99.4, 223.7mile
Pulse width	5ns, 10ns, 20ns, 50ns, 100ns, 200ns, 500ns, 1μs, 2μs, 10μs, 20μs
Event dead zone	0.8m
Attenuation dead zone	4m
Distance accuracy	±(1m+Distance×2.5×10 ⁻⁵ +Sampling resolution)
Loss scale linearity	±0.1dB or ±0.05dB / dB
Sampling points	110,000 points
Resolution	0.04m ~ 10.24m
Operating mode	Press keys and touch screen
Battery capacity	5,400mAh / Continuous working hours: 8H, Standby time: 14H
File format	SOR(Telcordia), BMP, JPG
External connection	USB 2.0
Compatible connector	FC, SC (APC or UPC)
Power supply	AC Input 100-240V, 50-60Hz / DC Input 19V, 3.42A
VFL module	Operating wavelength: 650nm ±10nm, Universal interface: 2.5mm
Light source	Operating wavelength: 1310nm / 1550nm ±10nm

PACKAGE

OTDR	MINI2
Power Cable	ACC-25
AC Adapter	JS-180300
Pouch	✓
User Manual	✓
Touch Pen	✓
Verification Specifications	✓

GENERAL SPECIFICATIONS

Dimension	4.52H x 6.81W x 2.51D inches (115H x 173W x 64D mm, excluding rubber bumper)
Weight	1.98pounds (0.90kg with battery)
Operating conditions	-10~50°C, 0%~45% (no moisture condensation)
Storage conditions	-20~60°C, 0%~95% (no moisture condensation)



Phone: 1-877-287-7535
Email: sales@fiberopticsale.com

Fiber Optic Resale Corp
21 Technology Way
Suite 4E5
Nashua, NH 03030