

FORC mini2

Optical Time Domain Reflectometer

ACCURATE & COMPACT OTDR

SOLA (Smart Optical Link Analyzer)

5" Touch Screen with Smart GUI

8GB Internal Storage with Internal SD Card & External USB Memory

Built in VFL & Light Source

Fast Booting Time

Lightweight Handheld

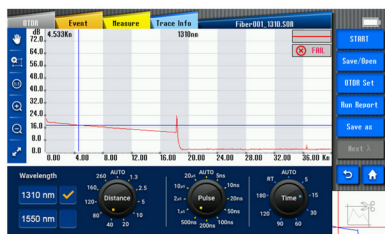


Optical Time Domain Reflectometer



Characteristics

OTDR



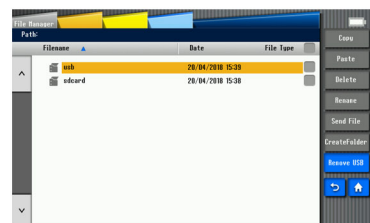
OTDR mode allows for measuring distance, loss, reflectivity, attenuation and accumulation loss on a fiber optical link.

VFL



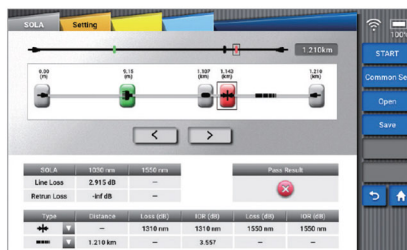
VFL allows for finding direct fault locations in fiber test dead zones or performing fiber core calibration in multi-fiber cables.

FILE MANAGER



File Manager can provide powerful file management that users can manage files conveniently.

SOLA



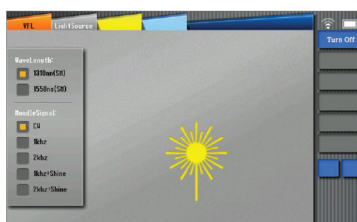
SOLA is an application for the OTDR, designed to simplify OTDR test process without the need to configure the parameters or analysis while parsing multiple complex OTDR curves.

FIBER MICROSCOPE



Fiber end tester (peripheral required) is mainly used to test the cleanliness and flatness of the fiber end face.

LIGHT SOURCE



Invisible light source (1310 or 1550nm) can provide the following types of light, including CW light, 1kHz light, 2kHz light, 1kHz blink light, 2kHz blink light.

Measure Fiber Optical Link

Simplify the Test Process

Identify Fiber Fault Location

Magnify the Fiber End Face

5" Touch Screen with Smart GUI
High Brightness
Resolution of 800x480

Fast Booting Time

touch

Description

The MINI2 compact hand-held OTDR is used in the testing, installation and maintenance of fiber optic networks. Features of the MINI2 OTDR include, high precision test capabilities, fast response times, and easy to learn operation. The multipoint capacitive touch screen allows for user friendly operation. The MINI2 OTDR offers accurate and fast test results. The MINI 2 Creates a report automatically in .SOR, BMP, JEEG, GDM, SOLA and PDF file formats

Specifications

Model	MINI 2
Display	5 Inches, High Brightness TFT LCD, Resolution of 800 x 480
Distance unit	m / km / mile / ft
Dynamic range	32dB / 30 dB (1310/1550nm)
Range settings (km)	1.3, 2.5, 5, 10, 20, 40, 80, 120, 160, 260km
Range settings (mile)	0.81, 1.55, 3.11, 6.22, 12.4, 24.8, 49.6, 74.6, 99.14, 161.5 mile
Pulse width	05ns, 10ns, 20ns, 50ns, 100ns, 200ns, 500ns, 1us, 2us, 10us, 20us
Dead zone (Event/Attn./PON)	1m / 5m / 50m
Distance accuracy	$\pm(1m + \text{Distance} \times 2.5 \times 10^{-5} + \text{Sampling resolution})$
Linearity	0.03dB
Sampling points	110,000 points
Refractive index	1.000000 - 2.000000 (step: 0.000001)
Splitting ratio Resolution	Up to 1:32 splitter
Loss readout resolution	0.04m ~ 10.24m
Battery capacity	0.001dB
File format	Operating Time : Up to 12hours SOR,BMP,JPG,GDM,SOLA,PDF
External connection	USB 2.0
Compatible connector	APC(FC, SC, LC), UPC(FC, SC, LC, ST)
Power supply	AC Input 100-240V, 50-60Hz / DC Input 19V, 3.42A
VFL port	2.5mm ferrule type
VFL wavelength	650nm \pm 10nm
VFL distance	Up to 15km
VFL output power	20mW
Light source	Operating wavelength: 1310nm / 1550nm \pm 10nm
Light source output power	-5dBm

Ordering Information

	XXX	-	XXX	-	XXX	-	XXX	-	XXX	-	XXX	-	XXX
Model •	_____	_____	_____	_____	_____	_____	_____	_____	_____	_____	_____	_____	_____
OTDR: MINI2													
Optical Configuration •	_____	_____	_____	_____	_____	_____	_____	_____	_____	_____	_____	_____	_____
SMF1: 1310/1550nm													
Basic Software •	_____	_____	_____	_____	_____	_____	_____	_____	_____	_____	_____	_____	_____
OTDR: OTDR Application Only													
OS: OTDR & SOLA Application													
Fiber Connector •	_____	_____	_____	_____	_____	_____	_____	_____	_____	_____	_____	_____	_____
CNT1: FC/APC CNT4: FC/UPC CNT7: SC/UPC													
CNT2: SC/APC CNT5: SC/UPC													
CNT3: LC/APC CNT6: LC/UPC													
Light Source •	_____	_____	_____	_____	_____	_____	_____	_____	_____	_____	_____	_____	_____
LS0: Without VFL & Light Source													
LS1: With VFL													
LS2: With Light Source													
LS3: With VFL & Light Source													
Microscope •	_____	_____	_____	_____	_____	_____	_____	_____	_____	_____	_____	_____	_____
MS0: Without Microscope													
MS1: With Microscope - V20													
Hard Case •	_____	_____	_____	_____	_____	_____	_____	_____	_____	_____	_____	_____	_____
HC0: Without Hard Case													
HC1: With Hard Case													

Weight and Dimensions



115mm



64mm

173mm

Weight 1.98 Lbs

Kit Contents

OTDR	MINI2
Power Cable/AC Adapter	ACC-25 / JS-180300
Carrying Case - OTDR	Soft Case
Transit Case	Hard Case
Shoulder Strap	✓
Touch Pen	✓
Calibration Certificate	✓



Contact

Fiber Optic ResaleCorp.
21 Technology Way
Suite 4E5
Nashua, NH 03060

877.287.7535
sales@forcfiber.com



www.FORCfiber.com