





About FiberOptic Resale Corporation

FiberOptic Resale Corporation manufactures, distributes and provides full service for all your fiber optic test equipment product requirements.

Our company mission statement is a reflection of our core values:

Provide the highest quality products, service, and business ethics to our customers and partners. Helping the world communicate more efficiently through fiber optic technology is our mantra.

FiberOptic Resale Corp—has been the top USA Channel distributor for INNO Instrument fusion splicers since 2012. We are authorized USA Channel partners for Fitel/OFS, EXFO, Yokogawa America, and (ODM) Optical Design Manufacturing test equipment. Our fiber optic consumables and tools include products from Polywater and Jonard, as well as electrodes, cleaver blades, splice protection sleeves and more, all offered on our web site and available for purchase online.

FORC offers refurbished fiber optic equipment that's USA channel sourced only. We pride ourselves with supplying the highest quality refurbished equipment to meet any budget. All equipment comes fully tested and calibrated to comply with industry standards and includes our standard warranty. Our sales staff and engineers are constantly product trained and will assist you choose the instrument that's right for any job.

**We are a USA Government
Verified Vendor**



CAGE Code: 76UY9

In-house Lab



Our in-house lab is staffed by factory trained and certified technicians.
Authorized INNO Repair Center

**Veteran Owned Business
Since 2000**



Payments & Financing

Payment Methods

We accept cash, checks, money orders, all major credit cards, paypal and terms available upon credit verification.



Financing

Financing through Direct Capital – Equipment & Technology Financing

Get the Right Financing for You... and Your Business!

Direct Capital is a national lender committed to your success. Their goal is to help companies like yours drive revenue and profits with service and value that no other business in our industry can deliver.

Financing Helps Your Business Grow - QuickSpark

Financing affords you the option of getting new equipment now and paying for it in small, manageable payments. You can start earning money with your new equipment before your first payment is even due! QuickSpark offers monthly payments that range from 12 to 60 months and ensure the best fit for your business. We also offer Variable Payments upon request that can be matched to seasonal cash flow variations.

Shipping

Shipping - All shipments are F.O.B. New Hampshire, USA.

International Shipments - Products sold internationally may be exported from the United States only in accordance with Export Administration Regulations. Diversion contrary to United States law is prohibited.

Domestic:

We use UPS & Fedex for most packages and provide tracking information once the product is shipped. Overnight shipping is available upon request. Overnight or express shipments require prior authorization by FiberOptic Resale Corp. Please contact us directly to finalize an overnight or express shipment.

International Shipping:

We can ship to US, Canadian, and European destinations overnight and most other worldwide locations within 24-48 hours. Our equipment is carefully packaged to meet your expectations and standards and is shipped via FedEx, UPS, DHL, BAX Global, Mach1, or a customer-designated carrier. We can ship on your UPS, Fedex or DHL account number. Shipping charges are dependent on product weight and destination.

Duties & Taxes:

Products sold internationally may be exported from the United States only in accordance with Export Administration Regulations. Duties and taxes are the Customer's responsibility and are paid directly by the Customer.

Table of Contents



Splicing

Cleavers	19
Cleaver Blades	28
Electrodes	26
Splice-on Connectors	29

Fusion Splicers & Installer Kits

FORC Splicers	5	Installer Kits	31
INNO	9		
Fitel	14		
EasySplicer	18		

Tools

Jonard Tool / Prep & Cleaning Kits	63
Jonard Manual Strippers	62
Thermal Strippers	60

Consumables

Connec Cleaners	64
PolyWater Cleaning Kits	65
Cleaning Solutions	67
Lubricants / Wipes	66

Test Equipment

Fiber Optic Identifiers	53
Fiber Scopes	54
Inspection Probes	52
Launch Boxes	58
Optical Laser Source	50
Optical Loss Test Sets	56
Optical Test Kits	55
OTDRs	36
Power Meters	48
Visual Fault Locators	57

Services

35

Repair Services	Calibration
Services	Cleaning Services

This catalog contains a sampling of our offerings. For a full list of our products & manufacturers please visit our website www.fiberopticresale.com or call 877-287-7535

Our Partners Include





Introducing FORC Fiber - Our OEM Brand of Fusion Splicers

**Fusion Splicers That Can Compete With The Big Names
Without The Big Price!**

FORC F15 Core Alignment Fusion Splicer

Utilizing the latest in fiber optic technology our FORC Fiber OEM splicers are designed for rugged in the field use including rubber bumpers for splicer & screen protection. All FORC fusion splicers come standard with dual batteries, an easy to use LCD color touch screen, storage for up to 10,000 records, bright LED lights for dark environments, a 3 year warranty and so much more.



WHY PAY MORE!

ONLY \$6,895



The F15 is the newest compact rugged 6 motor core alignment splicer on the market. Designed with the user in mind and is perfect for any FTTH and Outside plant application. The small, compact design makes it a perfect splicer for any environment. Features include a color 4.3-inch LCD screen. Friendly GUI (Graphic User Interface) and detachable SOC capability for FTTX field applications. 3 bright LEDs for dark environments and dual batteries come standard per kit allowing approximately 400 cycles. Cutting Edge Technology and Advanced CPU power allow fast 9 second splice time and 15 second heat time.



FORC F15 Core Alignment Fusion Splicer Features

- Core Alignment Splicing with DACAS (Digital Core Alignment System)
- Dual batteries 5200m Ah per kit -up to 400 Cycles
- 3 Bright LED Lights for Dark Environments
- Fast -Splice and Heat Time
- 4.3-inch Color LCD Captive Touch Screen
- Detachable SOC -Holders and Oven Attachment
- Designed with Rubber Bumpers for Splicer and Screen Protection
- Automatic Trash Bin Cleaver Standard

**Weekly & Monthly
Rates Available**

**Monthly
Rentals \$995**





FORC F12R Ribbon Fusion Splicer

Our FORC-F12R OEM ribbon splicer with the fully motorized clamp alignment system, is the most powerful and state-of-the-art ribbon splicer in the market. Its advanced automatic clamp alignment system offers an accurate and dependable ribbon fiber splicing up to 12 fibers. The FORC-F12R provides maximum work efficiency through the fast splicing & heating time, ultra-high battery capacity of 232 splice/ heat cycles with dual batteries standard. Universal holder both for 250µm & 900µm single fiber. The FORC-F12R ensures the most reliable work experiences to our valuable customers.



WHY PAY MORE!



ONLY \$10,200

FORC F12R Ribbon Splicer Features

- MOTORIZED CLAMP ALIGNMENT SYSTEM
- Dual batteries 5200m Ah per kit -up to 232 Cycles
- 3 Bright LED Lights for Dark Environments
- Fast -Splice and Heat Time
- 4.3-inch Color 320X Captive LCD Touch Screen / Tempered Glass Ultra
- Fast Thermal Stripper
- Designed with Rubber Bumpers for Splicer and Screen Protection
- Automatic Trash Bin Cleaver Standard

F12R Splicer Kit Contains

F12R Ribbon Splicer: F12R
 Fiber Optic High Precision Cleaver: F7
 SOC Heater Cover - HTN-SOC
 Thermal Stripper: FTS-12
 Electrodes: E14
 Battery: FCBT-5200
 Power Cord: ACC-25
 HDMI Cable: HDMI-01
 AC Adapter: JS-1618
 Cooling Rack: CG-22
 Instruction Manual: CD
 12 Ribbon Fiber Holders: FH-12L/ FH-12R
 10 Ribbon Fiber Holders: FH-10L/ FH-10R
 8 Ribbon Fiber Holders: FH-08L / FH-08R
 6 Ribbon Fiber Holders: FH-06L / FH-06R
 4 Ribbon Fiber Holders: FH-04L / FH-04R
 2 Ribbon Fiber Holders: FH-02L / FH-02R
 Single Fiber Holders: FH-900L / FH-900R, FH-250L / FH-250R / FH-SOC
 Transit Case: NBX-88



**Weekly & Monthly
Rates Available**

**Monthly
Rentals \$1,395**



F1 Active Clad-alignment Fusion Splicer

The FORC F1 our OEM splicer is the newest compact rugged 4 motor Clad alignment splicer on the market. Designed with the user in mind and is perfect for any FTTH and Outside plant application. The small, compact design makes it a perfect splicer for any environment. Features include a 320X color 4.3-inch LCD screen, Friendly GUI (Graphic User Interface) Detachable SOC capability for FTTH field applications, 2 bright LEDs for dark environments and dual batteries come standard per kit allowing approximately 400 cycles. Cutting Edge Technology and Advanced CPU power allow fast 9 second splice time and 15 second heat time.

WHY PAY MORE!



ONLY \$2,995

FORC F1 Fusion Splicer Features

- 4 motor Active V-Groove Clad Alignment
- 9 Second Heat Time
- Dual batteries 5200m Ah per kit -up to 400 Cycles
- Light 1.6 7 kg rugged and compact design for FTTH and last mile applications
- Dual camera display with 4.3-inch HD color LCD
- Detachable SOC -Holders and Oven Attachment
- Designed with Rubber Bumpers for Splicer and Screen Protection
- Automatic Trash Bin Cleaver Standard



F1 Fusion Splicer Kit Contents

- Fusion Splicer | F1
- High Precision Cleaver | F7
- Fiber Holder | YFH-J1
- Electrodes | E-14
- Instruction Manual | CD
- Battery Pack | FLBT-5200
- Power Cord | ACC-25
- Carrying Case | NBX-88
- SOC Holder | FH-SOC
- SOC Heater Cover | FHT-SOC
- Cooling Rack | CG-22
- HDMI Cable Manual | HDMI-15



Weekly & Monthly Rates Available

Monthly Rentals \$900

FREE FORC F15

When You Buy 2,000 SOC's

Purchase 2,000 SOC's at \$5.95 each and receive a FREE FORC Fiber F15 splicer. IT'S THAT EASY!



Splice-On Connectors

Choose from LC, SC, ST or FC styles. These SOC's come in packs of 10 which you can mix and match for specific fiber types. When you buy any combination of 2,000 SOC's at \$5.95 each you receive an INNO Instrument View 5 fusion splicer free of charge.

The F15 is the newest compact rugged 6 motor core alignment splicer on the market. Designed with the user in mind and is perfect for any FTTH and Outside plant application. The small, compact design makes it a perfect splicer for any environment.



- Universal SOC + Heater Holders
- Only 3 minutes per connection
- No costly interconnect box
- Low loss, low back reflection
- LC, SC, ST, FC styles available - SM/MM
- 3mm SOC's also available
- Each Splice-On Connector includes a splice protection sleeve



FORC F15 Core Alignment Fusion Splicer Features

- Core Alignment Splicing with DACAS (Digital Core Alignment System)
- Dual batteries 5200m Ah per kit -up to 400 Cycles
- 3 Bright LED Lights for Dark Environments
- Fast -Splice and Heat Time
- 4.3-inch Color LCD Captive Touch Screen
- Detachable SOC -Holders and Oven Attachment
- Designed with Rubber Bumpers for Splicer and Screen Protection
- Automatic Trash Bin Cleaver Standard

We Offer Financing

15% OFF*
Any INNO Splicer
Use Code - IS17



INNO View 12R+ Ribbon Splicer



View 12R+ ribbon splicer with a fully motorized clamp alignment system, is the most powerful and state-of-the-art ribbon splicer on the market. Its advanced automatic clamp alignment system offers more accurate and dependable ribbon fiber splicing up to 12 fibers with the double-tapping (zoom in & out) to the world's highest magnification of 250x. View 12R+ ribbon splicer provides maximum work efficiency through it's fast splicing & heating time. The new View 12R+ has an ultra-high battery capacity of 220 splice/heat cycles, and universal holder for both 250µm & 900µm single fibers.

\$11,490



View 12R's advanced clamp activates itself in accordance with the position of fiber so that each core of individual fiber is correctly placed on its assigned v-groove. This process enables more accurate and reliable splicing process.

View 12R Specifications

Number of Fiber - 1, 2, 4, 6, 8, 10, 12
Applicable Fibers - SM(ITU-T G.652&G.657) / MM(ITU-T G.651) / DS(ITU-T G.653) / NZDS(ITU-T G.655)
Compatible Fiber / Cable - Ribbon: 0.25~0.4 mm / Single: 250 µm & 900 µm
Cleaved Length - 10 ~ 13 mm
Splicing Mode - Max 100 modes
Splice Loss - SM: 0.05dB / MM: 0.02dB / DS: 0.08dB / NZDS: 0.08dB (ITU-T standard)
Return Loss - >>60dB
Splicing Time - Ribbon fiber: 15 sec / Single fiber: 9 sec
Estimated Splice Loss - Available
Heating Sleeve Length 60mm, 50mm, 40mm, micro
Heating Time - Typical heating time: 20sec
Results Storage - The last 2000 results

View 12R Package Includes

View 12R Fiber ribbon splicer
 High Precision Cleaver - V7
 Thermal Stripper - TS-8
 Fiber holders:
 12 Ribbon: FH-12L / FH-12R - 8 Ribbon: FH-8L / FH-8R - 4 Ribbon: FH-4L / FH-4R - 250 & 900µm
 Single: FH-UL / FH-UR (Universal)
 SOC Holder: FH-SOC-R
 SOC Heater Cover - HTS-SOC
 AC Adapter - JS-180300
 Cooling Tray - CG-22
 Electrode - E-50
 Electrode Grinder - EG-18
 Manual CD - CD
 Battery Pack - LBT-20
 Power Cable - ACC-25
 Micro HDMI to USB Cable - HDMI-15
 DIN Cable - DIN-18
 Cigarette Lighter Cable - CJ-11
 Thermal Stripper Charger - AR-8
 Protection Sleeves - PS-12R-40
 V-Groove Cleaning Brush - CB-01
 Carrying Case - NBX-35

***One Coupon Code per customer. Coupons can not be combined with any other offers.**



INNO View 7 Core-alignment Fusion Splicer

View 7, core-alignment fusion splicer with the highest magnification, is one of the most dependable splicers on the market. View 7 splicer features a rubberized design for field use in harsh weather conditions. View 7 has a friendly intuitive GUI (Graphical User Interface) with a 5 inch high-resolution color LCD touch screen that is easy to see and use. Especially, the highest magnification by 520X enables users to check the fibers clearly with the naked eyes. The sizeable, large battery capacity at full charge allows up to 355 splice and heating cycles. In addition, the improved heating oven provides fast heating times to 18s. With the advanced technology, View 7 gives the most reliable working experience



5" Touch screen with double tap technology allowing users to zoom in and out with just a touch of the screen

\$9,000



View 7 Fusion Splicer Features:

Number of Fiber - Single

Applicable Fibers - SM(ITU-T G.652&G.657) / MM(ITU-T G.651) / DS(ITU-T G.653) / NZDS(ITU-T G.655)

Compatible Fiber / Cable - 0.25~3.0 mm / Indoor Cable (with VFH-40)

Cleaved Length - Diameter: 0.125~1 mm / Cleave Length: 8~16 mm

Splicing Mode - Preset 45 modes / Max 128 modes

Typical Splice Loss - SM: 0.02dB / MM:0.01dB /

DS:0.04dB / NZDS: 0.04dB / G.657: 0.02dB(ITU-T Standard)

Return Loss - >>>60dB

Splicing Time - Auto mode : 8 sec / Quick mode : 7 sec

Estimated Splice Loss - Available

Protection Sleeve Length - 20~60 mm

Heating Time - Typical heating time: 13 sec

Results Storage - The last 2000 results

View 7 Fusion Splicer Package Includes

Fusion Splicer
High Precision Cleaver
Fiber Holder
AC Adapter
Cooling Tray
Electrode
Manual CD
Battery Pack
Power Cable
Carrying Case
Stripper

View 7
V7
VFH-10 / VFH-40
JS-180300
CG-22
E-50
CD
LBT-20
ACC-25
NBX-35
CFS-2

Rent The View 7

Weekly & Monthly Rates Available

Monthly Rentals \$1,295

SPLICING | FUSION SPLICERS



View 5 Fusion Splicer



\$8,000



Core-align Splicing Method with DCAS (Digital Analysis Core Alignment System)

Splicing Time - Quick mode : 7 sec
Auto mode : 9 sec
Estimated Splice Loss - Available
Heating Sleeve Length - 20~60 mm
Heating Time - FP-03 typical heating time: 13 sec
Number of Fiber - Single
Applicable Fibers - SM(ITU-T G.652&G.657) / MM(ITU-T G.651) / DS(ITU-T G.653) / NZDS(ITU-T G.655)
Compatible Fiber / Cable - 0.25~3.0 mm / Indoor Cable
Cleaved Length - Diameter: 0.125~1 mm / Cleave Length: 8~16 mm
Cladding Diameter - 80~150 μm
Splicing Mode - Max 128 modes
Heating Mode - Preset 6 modes / Max 32 modes
Typical Splice Loss - SM: 0.02dB / MM:0.01dB / DS:0.04dB / NZDS: 0.04dB / G.657: 0.02dB(ITU-T Standard)
Return Loss - >>60dB
Detachable SOC holder & heating oven



520X The Highest Magnification & Resolution

View 5, a core-alignment splicer with the world's highest fiber image magnification rate, is the most dependable fusion splicer in the market. View 5's 5 inch high-resolution color LCD touch screen with user-friendly intuitive GUI (Graphic User Interface) offers large and clear fiber images to users. By double-tapping the screen, users can Zoom In & Out the image to the world's highest magnification of

520x. Also View 5's compatibility with SOC (Splice-On-Connectors) will bring satisfactory experiences to users in FTTx field. Moreover, the 3 LED lights provide bright splice condition to the users working under dark environments. View 5 is the new industry standard of core-alignment splicer in the telecommunications industry.

View 5 Fusion Splicer Package Includes

Fusion Splicer
High Precision Cleaver
Fiber Holder
AC Adapter
Cooling Tray
Electrode
Manual CD
Battery Pack
Power Cable
Carrying Case
Stripper

View 5
V7
VFH-10 / VFH-40
JS-180300
CG-22
E-50
CD
LBT-20
ACC-25
NBX-35
CFS-2F

Weekly & Monthly Rates Available

Monthly Rental \$1,195

Easy to replace electrodes



Detachable heat oven for SOC's **Changeable holder for multi-functional splicing**





View 3 Active V-Groove Fusion Splicer

View 3 Fusion Splicer Features Include:

Number of Fiber - Single

Applicable Fibers - SM(ITU-T G.652&G.657) / MM(ITU-T G.651) / DS(ITU-T G.653) / NZDS(ITU-T G.655)

Compatible Fiber / Cable - 0.25~3.0 mm / Indoor Cable

Cleaved Length - Diameter: 0.125~1 mm / **Cleave Length:** 8~16 mm

Splicing Mode - Preset 7 modes / Max 128 modes

Typical Splice Loss - SM: 0.02dB / MM:0.01dB / DS:0.04dB / NZDS: 0.04dB / G.657: 0.02dB(ITU-T Standard)

Return Loss - >>60dB

Splicing Time - Auto mode : 9 sec / Quick mode : 7 sec

Estimated Splice Loss - Available

Protection Sleeve Length - 20~60 mm

Heating Time - Typical heating time: 35 sec

Results Storage - The last 2000 results

Tension Test - 1.96~2.25N



View 3 Fusion Splicer Package Includes

Fusion Splicer
High Precision Cleaver
Fiber Holder
AC Adapter
Cooling Tray
Electrode
Manual CD
Battery Pack
Power Cable
Carrying Case
Stripper

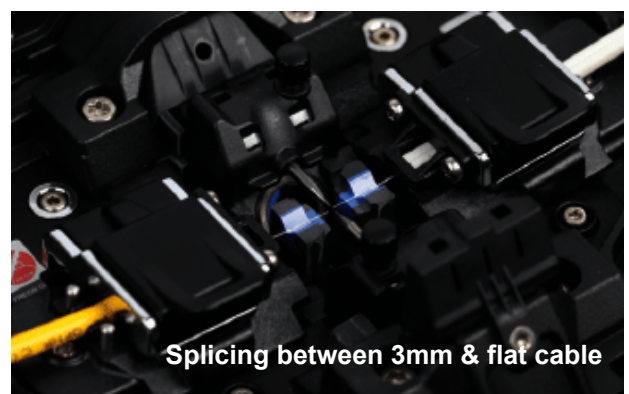
View 3
VF-15H
VFH-40 / FH-SOC
JS-180300
CG-22
E-50
CD
LBT-20
ACC-25
NBX-35
DC300A

\$3,600



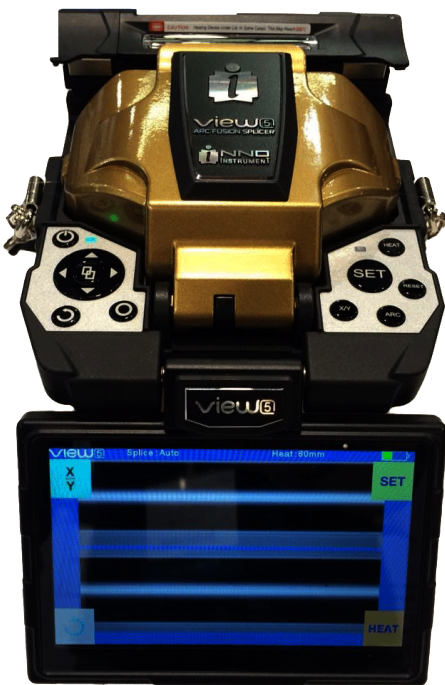
View 3, an active clad-alignment splicer with the world's highest fiber image magnification rate, is the most dependable fusion splicer in the market. View 3's 5 inch high-resolution color LCD touch screen with user-friendly intuitive GUI (Graphic User Interface) offers large and clear fiber images to users. By double-tapping the screen, users can Zoom In & Out the image to the world's highest magnification of 520x. Moreover, the 3 LED lights provide bright splice condition to the users working under dark environments. View 3 is the new industry standard of active clad-alignment splicer in the telecommunications industry.

Application of Fiber Cables



FREE View 5

When You Buy 2,000 SOC's



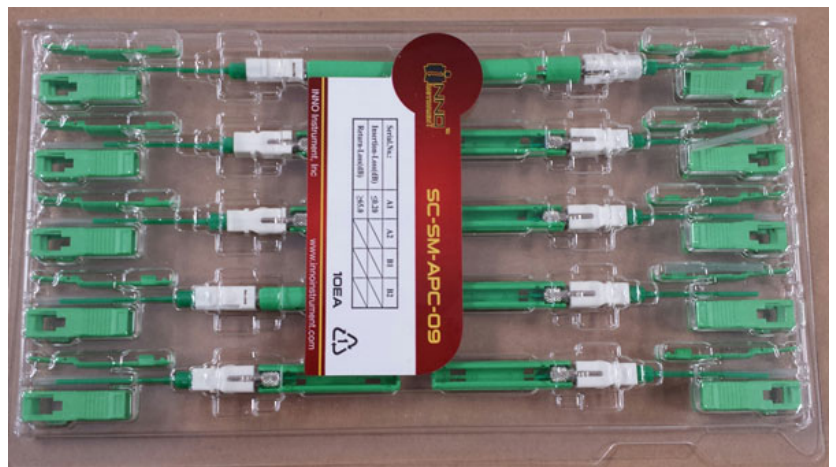
Purchase 2,000 SOC's at \$5.95 each and receive a FREE INNO View 5 splicer. IT'S THAT EASY!

Choose from LC, SC, ST or FC styles. These SOC's come in packs of 10 which you can mix and match for specific fiber types. When you buy any combination of 2,000 SOC's at \$5.95 each you receive an INNO Instrument View 5 fusion splicer free of charge.

Splice-On Connectors

- Universal SOC + Heater Holders
- Only 3 minutes per connection
- No costly interconnect box
- Low loss, low back reflection
- LC, SC, ST, FC styles available - SM/MM
- 3mm SOC's also available
- Each Splice-On Connector includes a splice protection sleeve

Need financing. We offer financing through Direct Capital





Authorized OFS Fitel Distributor

NEW!
Fitel S179
Splicer

This new splicer combines speed, precision, durability, portability and state-of-the-art communication methods in one unit, opening the door to an entirely new range of applications. Completely suitable for use with all Metro, LAN, FTTx and ultra-bend insensitive fibers, the S179 is one of the most powerful and user-friendly fusion splicing machines available today.

Fitel S179 Key Features

- Exceptional performance for fast and consistent fiber splicing
- Enhanced ease of use and portability
- High-speed splicing and heating
- Ruggedized body design
- Easy, intuitive splicer operation
- Compatible with Splice-on Connectors (SOC)
- State-of-the-art communication methods



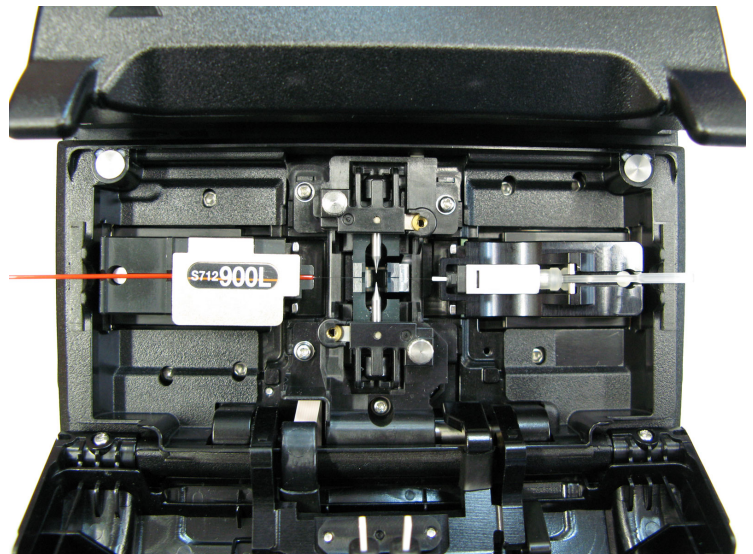
Fitel S179 Packages

S179A-BK-10 Basic Kit with 10mm Clamps	\$9,130.00
S179A-BK-250 Basic Kit with 250 Fiber Holders	\$9,130.00
S179A-BK-900 Basic Kit with 900 Fiber Holders	\$9,130.00
S179A-VK-10 Value Kit with 10mm Clamps	\$9,300.00
S179A-VK-250 Value Kit with 250 Fiber Holders	\$9,300.00
S179A-VK-900 Value Kit with 900 Fiber Holders	\$9,300.00
S179A-EX-900-V2 Extended Kit with 250 and 900 Fiber Holders	\$9,480.00

S179 Splicer Applications

Fiber lasers
Manufacture of optical parts
FTTx - LAN - Backbone
Enterprise - Long-haul
Data Centers

**The Fitel S179 Is Compatible
With Splice-on Connectors**





Fitel S178A V2 Fusion Splicer

Furukawa is a major manufacturer and provider of high quality optical fiber and fiber optic products. This includes a complete line of fusion splicers that produce highly accurate, reliable splices with minimal loss. Furukawa's fusion splicers are designed using state-of-the-art technology, decades of manufacturing experience and feedback from countless customer installations. You'll find that FITELE splicers are simple yet precise and reliable tools that can support your full range of fiber manufacturing, R & D, installation, and maintenance applications.

With splicing solutions that include the industry's only true hand-held fusion splicer, you can depend on FITELE to bring greater precision and ease to your splicing activity. Select from a broad range of technically advanced and highly reliable splicers designed for virtually every field and factory application.

The FITELE® S178 V2 Hand-Held Core-Alignment Fusion Splicer is the latest, state-of-the art addition to the S17X series of splicers. By combining speed, precision, durability and portability in one unit, the S178 V2 Fusion Splicer ushers in an entirely new range of applications for core alignment splicing.



Financing available through
DIRECTCAPITAL
click here

Pricing

Fitel S178A Fusion Splicer Models

Fitel S178A-BK-250-V2 Fusion Splicer Kit	\$8,673.50
Fitel S178A-BK-900-V2 Fusion Splicer Kit	\$8,673.50
Fitel S178A-VK-10-V2 Fusion Splicer Kit with 10mm clamps	\$8,835.00
Fitel S178A-VK-250-V2 Fusion Splicer Kit with 250mm clamps	\$8,835.00
Fitel S178A-VK-900-V2 Fusion Splicer Kit with 900mm clamps	\$8,835.00
Fitel S178A-EX-10-V2 Fusion Splicer Kit extended kit with 10mm clamps	\$8,968.00
Fitel S178A-EX-900-V2 Fusion Splicer Kit extended kit with 250 & 900 fiber holders	\$9,234.00

Fitel S153A V2 Fusion Splicers

The Fitel S153A V2 falls between a fixed vee-groove splicer and a full core alignment machine. The S153A V2 has an active 3 Axis alignment system which delivers low loss splices whilst eliminating errors found in fixed v-groove machines.



Fitel S153A Fusion Splicers Models	Price
Fitel S153A-VK-10-V2 Fusion Splicer Kit	\$6,810
Fitel S153A-VK-250-V2 Fusion Splicer	\$6,810
Kit Fitel S153A-VK-900-V2 Fusion	\$6,810
Splicer Kit Fitel S153A-EX-10-V2 Fusion	\$6,950
Splicer Kit Fitel S153A-EX-900-V2	\$7,230

S123 Fusion Splicer with its low profile and new super rugged body, the FITEL® S123 Series Fusion Splicer offers speedy operation for FTTX, LAN, backbone or long-haul installations.

Fitel S123C Fusion Splicers Models	Price
Fitel S123C-EX-10-V2 Fusion Splicer Kit	\$3,560
Fitel S123C-EX-900-V2 Fusion Splicer Kit	\$3,840
Fitel S123C-BC-900-V2 Fusion Splicer Kit	\$4,130
Fitel S123M4-V2 Ribbon Fusion Splicer Kit	\$9,220
Fitel S123M12-V2 Ribbon Fusion Splicer Kit	\$13,780





NINJA NJ001 Fusion Splicer

The FTEL NINJA NJ001 Handheld, Single Fiber Fusion Splicer delivers fast and reliable fiber splicing under even harsh environmental conditions. Combining portability and ease of use in a ruggedized body, the NJ001 offers powerful splicing performance with the durability needed for use in the field.

While the NJ001 design is compact and low profile, its large battery capacity helps save on time by allowing 100 splicing and heating cycles in one charge. Offering consistent splicing and outstanding ease of use, the NJ001 is suitable for use with all Metro, LAN and FTTX fibers (including ultra-bend insensitive fibers).

Fitel NJ001-3 Fusion Splicers Models

Price

Fitel NJ001-3 Fusion Splicer Kit - Does not include cleaver or any fiber holders	\$3,200
Fitel NJ001-3-BK-900-V1 Fusion Splicer Kit w/S712S-250 250um Fiber Holders (pair)	\$3,800
Fitel NJ001-3-VK-900-V1 Fusion Splicer Kit w/S712S-250 250um Fiber Holders (pair), FPF-01 Fiber Prep Fluid and FW-01 Fiber Wipes	\$3,830
Fitel NJ001-3-EX-10-V1 Fusion Splicer Kit w/ S712T-010 10mm fiber clamp, FPF-01 Fiber Prep Fluid and FW-01 Fiber Wipes and S946 Battery	\$3,930
Fitel NJ001-3-EX-900-V1 Fusion Splicer Kit w/S712S-900 900um Fiber Holders (pair), S712S-250 900um Fiber Holders (pair), FPF-01 Fiber Prep Fluid and FW-01 Fiber Wipes and S946 Battery	\$3,990

Package Includes:

- * NJ001-3 Splicer Main Body w/ Heater
- * HCC-09 Hard Carrying Case (KITCO)
- * S211B-Fiber Optic Stripper
- * S326A Hand-Held Precision Cleaver
- * S978A AC Adapter
- * ELR-01 Spare Electrodes (1 pair)
- * D5111 Electrode Cleaning Disk
- * V-Groove Cleaning Brush
- * Manual

In-house Service Center

3 Service Locations NH - MN - GA



With technicians in New Hampshire, Minnesota and Georgia-FORC delivers prompt and responsive services.

We have a broad range of expertise on the most popular equipment saving you time, money and the inconvenience of sending your test and measurement equipment to multiple OEMs. If you have any questions please call 877-287-7535.



The EZ7 Splicer Is Small In Size But Big In Value At Only \$1899

This splicer is fast, rugged and designed for field use. Save time and keep costs down with the EasySplicer



The EasySplicer FORC-EZ7 from FiberOptic Resale is the first of its kind handheld portable V-Groove fusion splicer kit made for FTTH installers, fiber installers, electrical contractors, training schools and more. Easy to use the EasySplicer EZ7 weighs in at only 4.3 pounds and has a splice time of under 7 seconds. With only 3 buttons and a single button to operate it makes it the easiest splicer on the market. YES! It's really that simple.

EZ7 Features

Splicing method: V-groove cladding alignment
Fiber Types: SMF, MMF 50/125 um fiber, 250 um primary and 900 um secondary coated fiber.
Fiber Handling: Fiber holders, 2 pairs (250 and 900)
Splice Programs: 2 pre-defined. SMF & MMF
Typical splice Loss: 0.03dB SMF, 0.01dB MMF
Typical Cycle time: 7s + 35s (splice cycle+ oven cycle)
Sleeve Dimensions: Max 64mm length, 2-5mm diameter supported by oven. **Communication:** USB, mini usb plug.
Memory: Internal 1MB, External SD-Card
Monitor: LCD, color, 2.8", 320x240 pixels
Magnification: Camera 140x
Operating Environment: 0-40°C, max 95% RH, non-condensing
Weight: 800g - 4.3 lbs
Power Sources: External power supply, 6V, 1.25A, 100-240VAC 50-60Hz, Build in Li-Ion battery pack
Splicing Capacity: 60 splicing cycles
Additional Features: Loss estimation, Fiber fault detection, SD-card for logging etc.

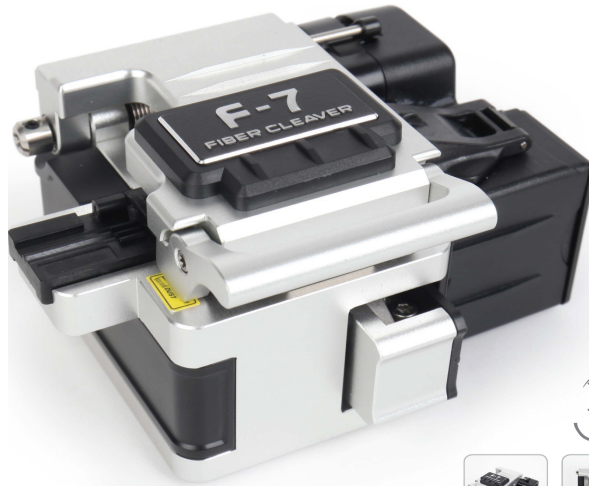
EZ7 Splicer Kit Contents

EasySplicer - EZ7
Fiber Cleaver - C7
AC Adapter
Hand Stripper
(2) 250um Fiber Holders
(2) 900um Fiber Holders
DC Car Adapter
Soft Carry Case
CD Manual



FORC Fiber OEM Cleaver F-7 Fiber Cleaver

High-precision fiber cleaver is durable, reliable, light weight, and suitable for 250um, 900um, 3.0mm and ribbon fiber cable. The life span of the blade averages more than 48000 rotations.



F-7 Cleaver Features

- Flexible for field or indoor use with either hand is possible; simple and fast operation.
- Blade automatically resets after cleaving, thus can improve work efficiency.
- New upgraded design Ease of access for blade adjustment with access hole design. All adjustment tools are hardened steel T9/T8.
- Standard automatic fiber shard collector.
- High quality anodized aluminum alloy, increased strength, small size, and light weight.
- Skid-proof cushioned base guarantees the cleaver works efficiently and stable.
- Universal holder: Ribbon cable, 250um, 900um, 3mm and drop cable.

Technical Parameters

Type	Size	Fiber type that can be applied to	Fiber diameter	Cutting length	Average angle	Blade service life	Operating step
F-7	100w*100*62Hmm	0.25mm-0.9mm Tail optical fiber drop cable	0.125mm	6-20mm	0.5°	Durable blade with 16 labeled positions, Average life of 1,000 cleaves per position, 3 height settings per blade position, TOTAL blade life averages 48,000 cleaves.	2

High precision cleaving for ribbon fiber cable as well as 250µm, 900µm, 3.0mm and flat cable with universal holder.



Durable blade lifetime over 48,000 fiber cleaves.

V7 Cleaver

V7 High Precision Cleaver is an instrument for high precision fiber cutting. V7 can be installed with a variety of holders for ribbon cable up to 12 fibers as well as universal holder which is applicable to 250µm, 900µm, 3.0mm fiber cable and flat cable. Work efficiency can be maximized with easy and simple 2 step operations. V7+ as an optional model has an automatic collector for fiber shards and off cuts. The blade provides over 48,000 fiber cleaves by easy and simple blade position selection. Helped by unmatched functionalities, users can achieve the most accurate cleaving and ideally prepare their fusion splicing.



V7 Pricing

With automatic trash bin \$675

Without automatic trash bin \$625

Type	Single & ribbon fiber cable cleaver
Cladding Diameter	125µm
Cleaved Length	Single fiber: 8~20mm / Ribbon fiber: 10mm
Applicable Fiber Cable	Single fiber: 250µm, 900µm, 3.0mm fiber cable and flat cable Ribbon fiber: 2 to 12 ribbon fiber cable
Typical Cleaved Angle	Less than 0.5 Degrees
Typical Blade Life Span	Total 48,000 fiber cleaves (1,000 fiber for 1 step * total 16 points * 3 heights)
Operation Steps	2 Steps
Reclaim Function	Blade pushback
Holder	Single: Universal holder Ribbon: Replaceable holder



V8 Cleaver



V8 Automatic High Precision Cleaver is an instrument for high precision fiber cutting. V8 can be installed with a variety of holders for ribbon cable up to 12 fibers as well as universal holder which is applicable to 250µm, 900µm, 3.0mm fiber cable and flat cable. Work efficiency can be maximized with a simple 1step operation and automatic collector for fiber shards and off cuts.



Specifications

Type - Single fiber and ribbon fiber

Cladding Diameter - 125µm

Cleaved Length - Single fiber: 8~20mm / Ribbon fiber: 10mm

Applicable Fiber Cable

Single fiber: 250µm, 900µm, 3.0mm fiber cable and flat cable Ribbon fiber: 2 to 12 ribbon fiber cable

Typical Cleaved Angle - Less than 0.5 Degrees

Typical Blade Life Span

Total 48,000 fiber cleaves (1,000 fiber for 1 step * total 16 points * 3 heights)

Operation Steps - 1 Steps

Reclaim Function - Blade pushback

Holder - Single: Universal holder / Ribbon: Replaceable holder

Applicable to Single and Ribbon Fiber

Ribbon cable up to 12 fibers And Universal holder for 250µm, 900µm, 3.0mm fiber cable



Size and Weight

Height: 2.28 inches (58 mm)

Width: 3.74 inches (95 mm)

Depth: 3.03 inches (77 mm)

Weight: 0.61 pounds with battery (280grams)

Compatible Replacement Electrodes

We offer compatible replacement electrodes for Fujikura, Ericsson, Fitel, Sumitomo and Corning Fusion Splicers. Compatible fusion splicer electrodes meet all required specifications and are a cost effective alternative to OEM electrodes. Every fiber optic electrode we sell is 100% individually inspected to ensure they adhere to our stringent tolerances. **For volume discounts please call 877-287-7535.**

Fujikura Fusion Splicers 100% Compatible Electrodes



Fujikura FSM Compatible Electrodes

Electrodes compatible with the Fujikura FSM-17S, 18S, 50R, 50S, 60S, 60R Fusion Splicers

Our Price \$49



Fujikura FSM-16 Compatible Electrodes

Electrodes compatible with the Fujikura FSM-16S, FSM-16R, and FSM-30R fusion splicers

Our Price \$49



Fujikura FSM-11 Compatible Electrodes

Electrodes compatible with the Fujikura FSM-11S and 11R fusion splicers

Our Price \$49



Fujikura 20/30 Compatible Electrodes

Electrodes compatible with the Fujikura 20CS, 20CSII, 20PM, 30P, 30PF, 30SF, 30S, fusion splicers

Our Price \$49



Fujikura 40 Compatible Electrodes

Electrodes compatible with the Fujikura FSM-40S, FSM-40F and FSM-40PM Fusion Splicers

Our Price \$49

Fitel 100% Compatible Electrodes

Fitel S121 / S122 Compatible Electrodes

Electrodes compatible for use with the Fitel S963, S121A and S122 Fusion Splicers

Our Price \$49



Fitel S198A Compatible Electrodes

Electrodes compatible for use with the Fitel S198A Fusion Splicer

Our Price \$49



Fitel S148 Compatible Electrodes

Electrodes for Fitel S148, S199S, S199M and S199 Fusion Splicers

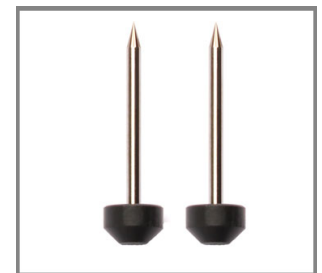
Our Price \$49



Fitel S175 Compatible Electrodes

Electrodes compatible for use with the Fitel S175 and S175 V-2000 Fusion Splicers

Our Price \$49



Fitel S177A Compatible Electrodes

Electrodes compatible for use with the Fitel S177A and S182A Fusion Splicers

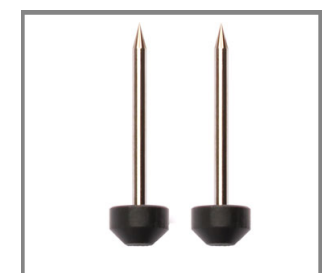
Our Price \$49



Fitel S182 Compatible Electrodes

Electrodes compatible for use with the Fitel S182K and S182PM Fusion Splicer

Our Price \$49



Fitel S176 Compatible Electrodes

Electrodes compatible for use with the Fitel S176 Fusion Splicer

Our Price \$49

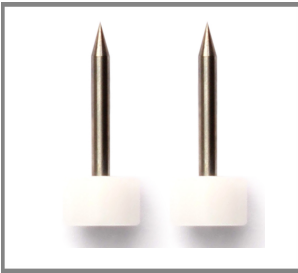
Fitel S174 Compatible Electrodes

Electrodes compatible for use with the Fitel S174 Fusion Splicer

Our Price \$49

SPLICING | COMPATIBLE ELECTRODES

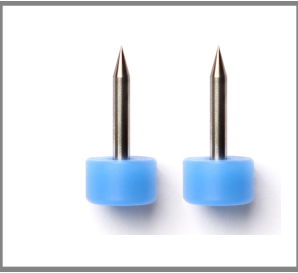
Sumitomo 100% Compatible Electrodes



Sumitomo Type 65 Compatible Electrodes

Electrodes compatible for use with the Sumitomo Type-65 Fusion Splicers

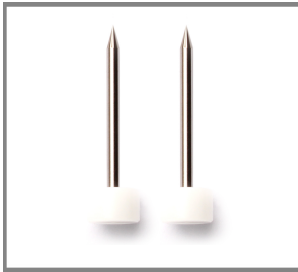
Our Price \$49



Sumitomo Type-25S Compatible Electrodes

Electrodes compatible for use with the Sumitomo Type-25S Fusion Splicer

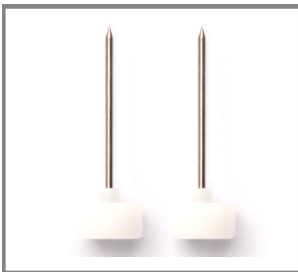
Our Price \$49



Sumitomo Type 63 Compatible Electrodes

Electrodes compatible for use with the Sumitomo Type-62 and Type-63 Fusion Splicers

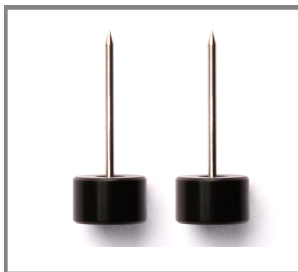
Our Price \$49



Sumitomo Type-36 Compatible Electrodes

Electrodes compatible for use with the Sumitomo Type-36, Type-35, 35SE, and Type-36 Fusion Splicers

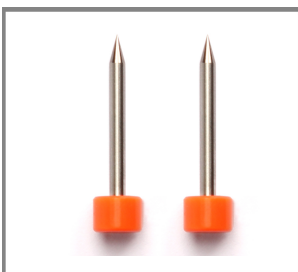
Our Price \$49



Sumitomo Type-37 Compatible Electrodes

Electrodes compatible for use with the Sumitomo Type-37 and Type-37HS8 Fusion Splicers

Our Price \$49



Sumitomo Type-39 Compatible Electrodes

Electrodes compatible for use with the Sumitomo Type-39 and Type-66 Fusion Splicers

Our Price \$49

Corning 100% Compatible Electrodes

Corning A60 Compatible Electrodes

Electrodes compatible with the Corning/Seicor A60 fusion splicer models with serial #'s 5999 and lower

Our Price \$49



Corning X77 Compatible Electrodes

Electrodes compatible for use with the Corning Siecor X77 Fusion Splicer

Our Price \$49



Corning M67 Compatible Electrodes

Electrodes compatible for use with the Corning Siecor M67 Fusion Splicer

Our Price \$49



Corning X75 Compatible Electrodes

Electrodes compatible for use with the Corning Siecor X75 Fusion Splicer

Our Price \$49



Corning M90 Compatible Electrodes

Electrodes compatible for use with the Corning Siecor M90-6000 Fusion Splicer

Our Price \$49



Corning M68 Compatible Electrodes

Electrodes compatible for use with the Corning Siecor M68 Fusion Splicer Fusion

Our Price \$49



SPLICING | COMPATIBLE ELECTRODES



INNO OEM Electrodes

Genuine Inno Instrument OEM electrodes for the IFS-10 and IFS-15H Fusion Splicer

Our Price \$49



Ericsson FSU-975 Compatible Electrodes

Electrodes compatible for use with the Ericsson FSU-975 Fusion Splicer

Our Price \$49



Ericsson FSU-995 Compatible Electrodes

Electrodes compatible for use with the Ericsson FSU-995 Fusion Splicer

Our Price \$49



Ericsson FSU-925 Compatible Electrodes

Electrodes compatible for use with the Ericsson FSU-925 Fusion Splicer

Our Price \$49



Ericsson RSU 4/8/12 Compatible Electrodes

Electrodes compatible for use with the Ericsson RSU-4/8/12 Fusion Splicers

Our Price \$49

SPLICING | COMPATIBLE ELECTRODES

**Buy Electrodes in Multi-packs
Of 5, 10 or 20 and Save!**



Our compatible electrodes are 100% compatible for the specific fusion splicer model. These electrodes are just as reliable as OEM electrodes but cost less. All our compatible electrode are manufactured to meet the specifications required for the Fiber Optic industry.

For larger volume discount pricing please call 1-877-287-7535.



5 Pack Electrodes \$221

10 Pack Electrodes \$441

20 Pack Electrodes \$882

Compatible electrodes are available for INNO, Fujikura, Sumitomo, Fitel, Ericsson, and Corning Fusion Splicers.

**In-house Service Center
3 Service Locations
NH - MN - GA**



10% Off*

**Fusion Splicer Cleaning
& Calibration Services**

Use Code - CC17

****One Coupon Code per customer. Coupons can not be combined with any other offers.***

Replacement cleaver blades for INNO Instrument, Fujikura, Fitel and Sumitomo fusion splicers at discount pricing.

Our replacement cleaver blades last just as long as the original equipment parts they replace but cost less. Each cleaver blade is manufactured to exceed the specifications required for the Fiber Optic industry. Every cleaver blade is 100% individually inspected to ensure that they adhere to our stringent tolerances. Using new cleaver blades can increase productivity through limiting re-work.



**INNO Instrument
Compatible Cleaver Blades**
Cleaver models:
VF-15, VF-15H, VF-78

Our Price \$64



**Sumitomo
Compatible Cleaver Blades**
Cleaver models:
FCP-22 and FC-6

Our Price \$74



**Fujikura
Compatible Cleaver Blades**
Cleaver models:
CT-03/04/07/100
CT-20 and CT-30

Our Price \$74



**Fitel
Compatible Cleaver Blades**
Cleaver models:
S321/S323/S324/S310

Our Price \$74

**We offer volume discounts
on all of our cleaver blades.**

**Please call 877-287-7535 for
more information.**

SPLICING | SPLICE-on CONNECTORS



Splice-On Connectors - LC, SC, ST, FC Styles Available in Single and Multimode

INNO splice-on connectors are designed to save time and increase productivity without sacrificing quality. These SOC's are pre-cleaved and pre-polished to improve the quality of the termination and reduce installation time required in the field.

**Buy 2000 SOC's at \$5.95
Each and Get a FREE
FORC F15 or View 5
Fusion Splicer!**

Splice-On Connectors Benefits

- ° No need for polishing and matching gel in the field
- ° Protect the splicing point inside of the connector body
- ° Easily assemble with One-Touch, Push-Pull System
- ° Enhanced high quality with improved optical features (Splice loss & Return loss)
- ° Split book structure prevent bending the fiber while inserting the connector into the termination

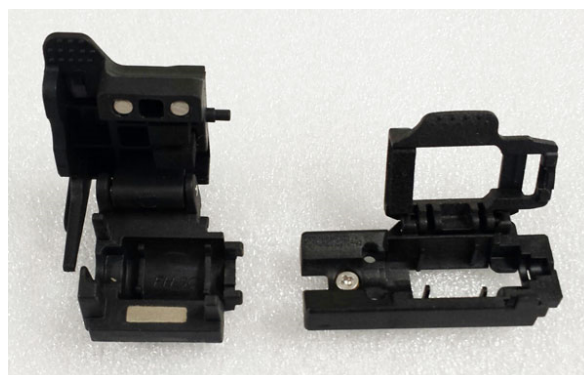


Splice-On Connectors

- Universal SOC + Heater Holders
- Only 3 minutes per connection
- No costly interconnect box
- Low loss, low back reflection
- LC, SC, ST, FC styles available - SM/MM
- 3mm SOC's also available
- Each Splice-On Connector includes a splice protection sleeve

**\$5.95 each
Sold in Packs of 10**

**We offer volume discounts.
Please call 877-287-7535 for pricing.**



SPLICING | SPLICE-on CONNECTORS



Splice-On Connectors Available Styles

Name of article	Type	Fiber					Polishing		Code					Color type
		G652D SM	G657A2 SM	50-OM3 MM	50 MM	62,5 MM	UPC	APC	0,9 mm	2,0 mm	2,4 mm	3,0 mm	3 X 2 Indoor Cable	
SC-SM-UPC-09	SC	●					●		●					White
SC-SM-APC-09		●						●	●					Green
SC-SM-APC-30		●						●				●		Black
SC-G657A2-APC-30			●					●				●		Black
SC-G657A2-UPC-30			●				●					●		Black
SC-SM-UPC-30		●					●					●		Black
SC-SM-UPC-30-S		●					●					●		White
SC-SM-APC-30-S		●						●				●		White
SC-50-PC-09					●		●		●					Black
SC-625-PC-09						●	●		●					Orange
SC-50-PC-09-OM3				●			●		●					Blue
FC-50-PC-09	FC				●		●		●					Black
FC-625-PC-09						●	●		●					Orange
FC-50-PC-09-OM3				●			●		●					Blue
FC-SM-UPC-09		●					●		●					White
FC-SM-APC-09		●						●	●					Green
LC-50-PC-09	LC				●		●		●					Black
LC-625-PC-09						●	●		●					Orange
LC-50-PC-09-OM3				●			●		●					Blue
LC-SM-UPC-09		●					●		●					White
LC-SM-APC-09		●						●	●					Green
ST-50-PC-09	ST				●		●		●					Black
ST-625-PC-09						●	●		●					Orange
ST-50-PC-09-OM3				●			●		●					Blue
ST-SM-UPC-09		●					●		●					White

We offer volume discounts. Please call 877-287-7535 for pricing.

\$5.95 each
Sold in Packs of 10



INSTALLER KITS

Your choice of Our OEM Fusion Splicers & MINI2 OTDR FORC F15 - F12R - F1

These Splicers & OTDR Combo Are Both Rugged And Dependable For In The Field Use!

Authorized INNO Instrument Distributor & Top INNO Sales & Service 5 Years In A Row!



**FORC F15 Splicer
& INNO MINI2
OTDR**

FORC F15 Fusion Splicer Features

- Core Alignment Splicing with DACAS (Digital Core Alignment System)
- Dual batteries 5200m Ah per kit -up to 400 Cycles
- 3 Bright LED Lights for Dark Environments
- Fast -Splice and Heat Time
- 4.3-inch Color LCD Captive Touch Screen
- Detachable SOC -Holders and Oven Attachment
- Designed with Rubber Bumpers for Splicer and Screen Protection
- Automatic Trash Bin Cleaver Standard

Only \$8,895



**FORC F12R Splicer
& INNO MINI2
OTDR**

FORC F12R Ribbon Splicer Features

- MOTORIZED CLAMP ALIGNMENT SYSTEM
- Dual batteries 5200m Ah per kit -up to 232 Cycles
- 3 Bright LED Lights for Dark Environments
- Fast -Splice and Heat Time
- 4.3-inch Color 320X Captive LCD Touch Screen /Tempered Glass Ultra
- Fast Thermal Stripper
- Designed with Rubber Bumpers for Splicer and Screen Protection
- Automatic Trash Bin Cleaver Standard

Only \$11,495



**FORC F1 Splicer
& INNO MINI2
OTDR**

FORC F1 Fusion Splicer Features

- 4 motor Active V-Groove Clad Alignment
- 9 Second Heat Time
- Dual batteries 5200m Ah per kit -up to 400 Cycles
- Light 1.6 7 kg rugged and compact design for FTTH and last mile applications
- Dual camera display with 4.3-inch HD color LCD
- Detachable SOC -Holders and Oven Attachment
- Designed with Rubber Bumpers for Splicer and Screen Protection
- Automatic Trash Bin Cleaver Standard

Only \$5299

MINI2 Features

- The World's Fastest Booting Time
- SOLA, Simplifies The OTDR Test Process
- 5" Touch Screen with Smart GUI
- 8GB Internal Storage with Internal SD Card & External USB Memory Built-In VFL and Light Source
- Very Light Weight and Hand-held

All Kits Include: Fusion Splicer, MINI2 OTDR, Cleaver, Electrodes, Thermal Stripper (F12R only), Dual Batteries, Power Cord, HDMI Cable, AC Adapter, SOC Holder & Heater Cover, Cooling Rack, Fiber Holders (specific to unit), CD Manual & Carry Case.

F12R Ribbon Splicer: F12R

12 Ribbon Fiber Holders: FH-12L / FH-12R
10 Ribbon Fiber Holders: FH-10L / FH-10R
8 Ribbon Fiber Holders: FH-08L / FH-08R
6 Ribbon Fiber Holders: FH-06L / FH-06R
4 Ribbon Fiber Holders: FH-04L / FH-04R
2 Ribbon Fiber Holders: FH-02L / FH-02R
Single Fiber Holders: FH-900L / FH-900R,
FH-250L / FH-250R / FH-SOC

The MINI2 OTDR



F15 Core Alignment Splicer Fiber Holder | VFH-J1

F1 Clad Alignment Splicer Fiber Holder | YFH-J1

Your choice of FORC F15 or F12R Fusion Splicer, MINI2 OTDR & Jonard TK-160 Fiber Prep Kit

F12 Ribbon Splicer Installer Kit

Only \$11,695



FORC F12R Ribbon Splicer Features

- MOTORIZED CLAMP ALIGNMENT SYSTEM
- Dual batteries 5200m Ah per kit -up to 232 Cycles
- 3 Bright LED Lights for Dark Environments
- Fast -Splice and Heat Time
- 4.3-inch Color 320X Captive LCD Touch Screen /Tempered Glass Ultra
- Fast Thermal Stripper
- Designed with Rubber Bumpers for Splicer and Screen Protection
- Automatic Trash Bin Cleaver Standard

F15 Core Alignment Installer Kit

Only \$9,195



FORC F15 Core Alignment Fusion Splicer Features

- Core Alignment Splicing with DACAS (Digital Core Alignment System)
- Dual batteries 5200m Ah per kit -up to 400 Cycles
- 3 Bright LED Lights for Dark Environments
- Fast -Splice and Heat Time
- 4.3-inch Color LCD Captive Touch Screen
- Detachable SOC -Holders and Oven Attachment
- Designed with Rubber Bumpers for Splicer and Screen Protection
- Automatic Trash Bin Cleaver Standard

The MINI2 OTDR



JONARD
INDUSTRIES CORP.
ESTABLISHED 1958

The TK-160 Fiber Prep Kit with FCC & VFL (includes the FCC-125 & FCC-250 Fiber Connector Cleaners 1.25mm & 2.5mm and the Visual Fault Locator Kit). This fiber preparation kit provides you with all of the tools needed to access and prepare a fiber optic cable for termination.



MINI2 Features

- The World's Fastest Booting Time
- SOLA, Simplifies The OTDR Test Process
- 5" Touch Screen with Smart GUI
- 8GB Internal Storage with Internal SD Card & External USB Memory Built-In VFL and Light Source
- Very Light Weight and Hand-held



TK-160 Prep Kit

INSTALLER KITS

Your choice of an INNO View 7 - View 5 - View 12R Splicer & View500 OTDR



Authorized INNO Instrument Distributor

Top INNO Instrument Distributor For Sales & Service 5 Years In A Row!



View 7, core-alignment fusion splicer with the highest magnification, is one of the most dependable splicers on the market. View 7 splicer is designed for field use in harsh weather conditions. View 7 has a friendly intuitive GUI with a 5 inch high-resolution color LCD touch screen that is easy to see and use.



The View 5 core-alignment fusion splicer has a 520X magnification allowing users to check fibers clearly with the naked eye. A friendly intuitive GUI (Graphical User Interface) and a 5 inch high-resolution color LCD touch screen that's easy to see and use help makes the View 5 fusion splicer easy to use.



View 12R+ ribbon splicer with a fully motorized clamp alignment system. Its advanced automatic clamp alignment system offers more accurate and dependable ribbon fiber splicing up to 12 fibers with the double-tapping (zoom in & out) magnification.

The VIEW500 OTDR

The VIEW500 OTDR is used in the installation and maintenance of fiber optic cables. Features of the VIEW500 OTDR include high precision test capabilities, fast response times, and easy to learn operation. The multi-point capacitive touch screen allows for user-friendly operation. The VIEW500 offers accurate and fast test results and creates a report automatically. The VIEW500 is equipped with an industrial grade CPU for creating and storing test results. This also ensures the results are measured quickly and accurately.



INNO Instrument Fusion Splicer Installer Kits Contain

- Fusion Splicer
- High Precision Cleaver
- Indoor Cable Stripper
- Stripper
- Battery Pack
- Cooling Tray
- Power Cable
- AC Adapter
- Electrode
- CD
- Carrying Case Cigarette
- Lighter

Xã, í €€ÁVÖÜ



INSTALLER KITS

Your choice of an INNO Splicer & ODM OTDR



View 7 - View 5 - View 3

Installer Kit Pricing

ODM OTR 500-S Singlemode OTDR

w/ Bluetooth Connect to Android OS 1310/1550nm

With VIS

W/O Vis

View 7	\$13,815
View 5	\$12,699
View 3	\$8,995

ODM OTR 700-S Long Range Singlemode OTDR

w/ Bluetooth Connect 1310/1550nm Wavelength Switching Power Meter

With VIS

W/O Vis

View 7	\$13,815
View 5	\$12,699
View 3	\$8,995

ODM OTR 700-M Long Range Multimode OTDR

w/ Bluetooth Connect 850/1300nm

With VIS

W/O Vis

View 7	\$13,815
View 5	\$12,699
View 3	\$8,995

ODM OTR 700-Q Quad SM & MM OTDR

w/ Bluetooth Connect 850, 1300, 1310 and 1550nm

With VIS

W/O Vis

View 7	\$13,815
View 5	\$12,699
View 3	\$8,995



INNO Instrument Fusion Splicer Installer Kits Contain

- Fusion Splicer
- High Precision Cleaver
- Indoor Cable Stripper
- Stripper
- Battery Pack
- Cooling Tray
- Power Cable
- AC Adapter
- Electrode
- CD
- Carrying Case
- Cigarette Lighter

Includes Your Choice of an INNO Instrument Fusion Splicer

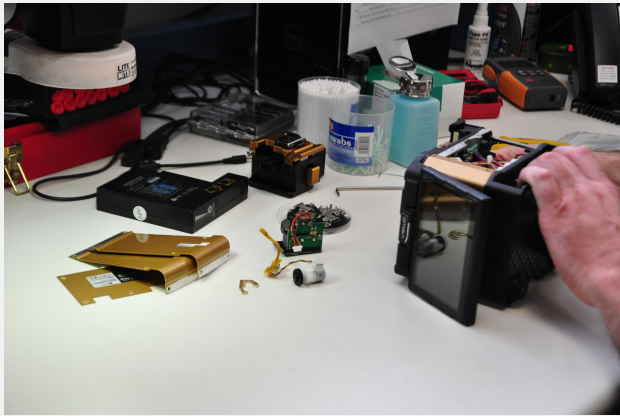
View 7 Core Alignment Fusion Splicer

View 5 Active V-Groove Fusion Splicer

View 3 Core Alignment Fusion Splicer

Repair - Cleaning - Calibration Services

With in-house technicians we deliver prompt and responsive services. Our techs have a broad range of expertise on the most popular equipment saving you time, money and the inconvenience of sending your test and measurement equipment to multiple OEMs. If you have any questions please call 877-287-7535.



We specialize in fusion splicer repair, cleaning and calibration services for the following products:

We Service USA model splicers only

FORC Fiber

INNO Instrument

Fitel Fusion Splicer

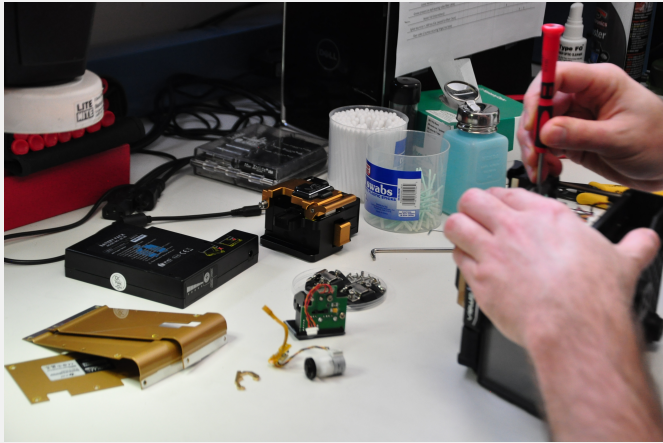
Corning Fusion Splicers

Fujikura Fusion Splicers

Sumitomo Fusion Splicers

Ericsson Fusion Splicers

We also service Fiber Optic Cleavers



Authorized Sales & Service Center for INNO Instrument America

Factory Trained INNO Instrument Authorized Repair Center

We provide a full range of services for your INNO IFS-10, IFS-15H and View Series fusion splicers. Our on staff Factory Trained Technicians can diagnose, repair, calibrate and clean your fusion splicer to keep it operating like new with little to no down time.

Our INNO fusion splicer cleaning & calibration check list includes:

- Clean Mirrors - Lenses
- Change the electrodes
- Check alignment
- Dust Check - Stuff Check - LED Check - Motor Check
- Arc Calibration
- I/O Port Check
- Memory Check
- Oven test
- Singlemode Splice Test
- Multimode Splice Test
- Our Trained Technicians perform a calibration of the machine and give you a detailed Certificate of Conformity
- Low Cost technical diagnosis and estimation of repairs
- Pre & post sales technical support
- On site self maintenance training - please inquire



The View500 Single-mode OTDR - Most Accurate & Fastest OTDR 1310nm/1550nm, VFL, OPM, V20 Microscope & SC/APC Connectors

ONLY \$4000 With 3 Year Warranty



The VIEW500 OTDR is used in the installation and maintenance of fiber optic cables. Features of the VIEW500 OTDR include high precision test capabilities, fast response times, and easy to learn operation. The multi-point capacitive touch screen allows for user-friendly operation. The VIEW500 offers accurate and fast test results and creates a report automatically. The VIEW500 is equipped with an industrial grade CPU for creating and storing test results. This also ensures the results are measured quickly and accurately.

View500 OTDR Technical Specifications

Model	VIEW500
Display	7 inches, High Brightness TFT LCD, resolution of 800×480
Distance unit	m / Km
Dynamic range	1310nm / 1550nm, 33dB / 35dB
Measurement range	1.3, 2.5, 5, 10, 20, 40, 80, 10km, 160km, 360km
Pulse width	5ns, 10ns, 20ns, 50ns, 100ns, 200ns, 500ns, 1μs, 2μs, 10μs, 20μs
Event dead zone	0.8m
Attenuation dead zone	4m
Distance accuracy	±(1m+Distance×2.5×10 ⁻⁵ +Sampling resolution)
Loss scale linearity	±2dB
Sampling points	160,000 points
Resolution	0.04m ~ 10.24m
Operating mode	Press keys and touch screen
Battery capacity	7,800mAh
File format	SOR(Telcordia), BMP, JPG
External connection	USB2.0
Port of connector	FC / APC, SC / APC
Power supply	AC Input 100-240V, 50-60Hz / DC Input 19V, 3.42A
VFL module	Operating wavelength: 650nm ± 10nm, Universal interface: 2.5mm
Light source	Operating wavelength: 1310nm / 1550nm ± 10nm
Optical power meter	Wavelength calibration: 850 / 1300 / 1310 / 1490 / 1550 / 1625nm
Measurement time (OPM)	-70 to +6dBm
Accuracy (OPM)	0.01dB
Unit display for OPM	dBm, mW , uW



The New MINI2 1310nm/1550nm, 32dB/30dB OTDR is Fast & Accurate
The MINI2 Hand-held OTDR is Compact & Lightweight - Just Under 2 lbs. With Battery!

ONLY \$2895 With 3 Year Warranty



MINI2 Features

The World's Fastest Booting Time
SOLA, Simplifies The OTDR Test Process
5" Touch Screen with Smart GUI
8GB Internal Storage with Internal SD Card & External USB Memory
Built-In VFL and Light Source
Very Light Weight and Hand-held

The MINI2 OTDR is used in the installation and maintenance of fiber optic cables. Features of the MINI2 OTDR include high precision test capabilities, fast response times, and easy to learn operation. The multi-point capacitive touch screen allows for user-friendly operation. The MINI2 OTDR offers accurate and fast test results and creates a report automatically. The MINI2 OTDR is compactly designed and very lightweight and hand-held.

Package Includes

MINI2 1310nm/1550nm, 32dB/30dB OTDR
Power Cable - ACC-25
AC Adapter - JS-180300
Touch Pen
User Manual
Pouch
Verification Specifications



ODM OTDR 500

The OTR 500 OTDR is available with an Auto-Wavelength Switching Power Meter. The power meter is calibrated at 850,1300,1310,1490,1550 and 1625nm, with storage of up to 10,000 power meter tests. The OpTrace OTDR software incorporates a feature to supply loss measurement reports and a real-time graph.

Features:

- Event table with PASS/FAIL analysis
- Bi-directional averaging - unit automatically performs all necessary calculations
- Short event dead zones make both units ideal for short link installations
- Bluetooth compatibility for precision control with Android Bluetooth-enabled smartphones and tablet



ODM Pricing

W/o probe With Probe

OTR 500 850/1300nm Multi Mode OTDRs

OTR 500-M 850/1300nm Multi Mode OTDRs w/Bluetooth connect to Android OS and your choice of adapter

When ordering add "P" for probe

OTR 500-M-SC	\$2,295	\$2,995
OTR 500-M-SC	\$2,295	\$2,995
OTR 500-M-ST	\$2,295	\$2,995

OTR 500 850/1300nm Multi Mode OTDRs

OTR 500-S1310/1550nm Single Mode OTDR w/Bluetooth connect to Android OS, with your choice of adapter

When ordering add "P" for probe

OTR 500-S-SC	\$2,295	\$2,995
OTR 500-S-SC	\$2,295	\$2,995
OTR 500-S-ST	\$2,295	\$2,995

ODM VIS 300 Probe



OTDR 500 Available with or without VIS 300 Probe VIS 300 Probe comes with 4 adapter tips

The VIS 300 advances field connector inspection with its unique focus system. This development virtually eliminates the need to place the user's hand in the same position each time for effective focus control. To focus simply turn the entire probe ¼ to ½ turns for complete focus range. No longer is it necessary for the user to keep one hand on the focus wheel. The VIS 300 includes a bright 3.5 inch LCD display and precision optics to provide an unmatched FOV (field of view) of 630µm by 440µm.



ODM OTDR 700

The ODM OTR 700 gives test technicians and contractors all the tools necessary for testing optical reflection and loss in fiber networks. The optional video scope allows for extensive options in endface inspection, ensuring industry acceptable optical connections. The unit comes in single mode (1310/1550nm), multi-mode (850/1300nm), or quad wavelength configurations, making the OTR 700 the perfect option for both single mode and multi mode installations.



Features:

- Event table with PASS/FAIL analysis
- Bi-directional averaging - unit automatically performs all necessary calculations
- Short event dead zones make both units ideal for short link installations
- Bluetooth compatibility for precision control with Android Bluetooth-enabled smartphones and tablets
- Schematic view

OTDR 700 Available with or without VIS 300 Probe VIS 300 Probe comes with 4 adapter tips

OTR 700-M 850/1310nm long range Multimode OTDR
w/Bluetooth connect to Android OS

OTR 700-S 1310/1550 long range Singlemode OTDR
w/Bluetooth connect to Android OS

OTR 700-Q Quad 850/1300/1310/1550nm SM & MM OTDR
w/Bluetooth connect to Android OS

OTR 700-SV 1310/1550 long range Singlemode OTDR
w/Bluetooth connect to Android OS, with VFL option

ODM Pricing

W/o probe With Probe

\$4,295	\$4,995
---------	---------

\$4,295	\$4,995
---------	---------

\$5,895	\$6,495
---------	---------

\$4,362	\$5,065
---------	---------

OTDR 700 Available with or without VIS 300 Probe - comew with 4 adapter tips

The VIS 300 advances field connector inspection with its unique focus system. This development virtually eliminates the need to place the user's hand in the same position each time for effective focus control. To focus simply turn the entire probe ¼ to ½ turns for complete focus range. No longer is it necessary for the user to keep one hand on the focus wheel. The VIS 300 includes a bright 3.5 inch LCD display and precision optics to provide an unmatched FOV (field of view) of 630µm by 440µm.



EXFO OTDRS - FTB Platforms

EXFO OTDR Platforms can be configured to your specifications. Please call 877-287-7535 for more information.

EXFO FTB-1 Platform

The result of EXFO's time-proven expertise in portable platform design, the FTB-1 Platform is an open testing solution for network infrastructure construction and troubleshooting. The FTB-1's built-in intelligence empowers frontline technicians to take field-testing efficiency to the next level.



The FTB-1 is specially designed for the following advanced applications:

- Fiber characterization
- FTTH testing
- Gigabit/10 Gigabit Ethernet configurations
- Wireless backhaul testing

EXFO FTB-1v2/PRO Platform

The FTB-1 version 2, available in standard (FTB-1v2) or Pro (FTB-1 Pro) model, is a light-weight compact test platform allowing field technicians to carry out dedicated optical, Ethernet, multiservice and radio frequency (RF) interference test applications simply and efficiently, thanks to its ultra-powerful processing and highly intuitive interface.



Designed for applications, such as:

- Fiber characterization
 - FTTH testing
 - Access fiber networks
 - Multiservice testing up to 10 Gbit/s*
 - Gigabit/10 Gigabit Ethernet configurations*
 - Wireless fronthaul and backhaul testing*
 - RF spectrum analysis over CPRI*
- * Applicable to the FTB-1 Pro version only.

EXFO FTB-2/PRO Platform

The FTB-2, available in a standard or Pro model, is the most compact solution on the market for multirate, multitechnology, multiservice testing, delivering all the power of a high-end platform in a conveniently sized, go-anywhere field-testing tool.



Designed for applications such as:

- CWDM turn-up testing
- Fiber characterization
- ROADM commissioning
- FTTx testing
- Gigabit/10G Ethernet configurations

EXFO FTB-500 Platform

The FTB-500 platform brings you new, highly advanced applications and pushes your current ones' efficiency to new heights. So go ahead: break new ground, set new test performance standards, tame new technologies. Benefit from an all-in-one platform that you can build around your most unique requirements.



The FTB-500 four-slot or eight-slot platforms are specially designed for the following advanced applications:

- Four-slot: CWDM turn-up testing
- Four-slot/Eight-slot: Multiservice transport testing
- Four-slot/Eight-slot: Gigabit/10 Gigabit Ethernet configurations
- Four-slot: ROADM and PTN turn-up testing
- Eight-slot: Distributed PMD analysis
- Eight-slot: ROADM and PTN turn-up testing
- Eight-slot: ROADM/POTS and 40 Gbit/s testing

YOKOGAWA OTDRs



FORC is an Authorized YOKOGAWA USA Channel Distributor

Compact chassis yet fully equipped with field testing functions the AQ1200 Multi Field Tester OTDR is a compact and lightweight handheld OTDR optimized for the installation and maintenance of optical fiber cables. Designed with ease of use in mind to simplify field testing, improve work efficiency and ensure quality results. Seven models are offered, each with unique wavelength(s) based on their specific application.

Yokogawa AQ1200 MFT OTDRs Come in a Variety of Models Base Price Starting at \$5,500



YOKOGAWA AQ1200 MFT OTDR Features:

- HE English + European languages
- D UL/ CSA standard
- Optical Connector - USC/SC type
- Find a fiber break point easily and rapidly
- Manual Loss test using light source & optical power meter
- High power measurement
- Loss measurement with LS & OPM interlock
- Work as Master & Slave using the communication fiber
- Measurement result storage and report output
- PON Optical Power meter
- Multi Fiber Measurement Function
- NEW - Trace Analysis Functions
- Visible Light Source
- Multi Fiber Measurement Function

YOKOGAWA AQ1200 OTDRs come in a variety of configurations. Please call 877-287-7535 for pricing on specific models.

AQ1200 MFT-OTDR Models

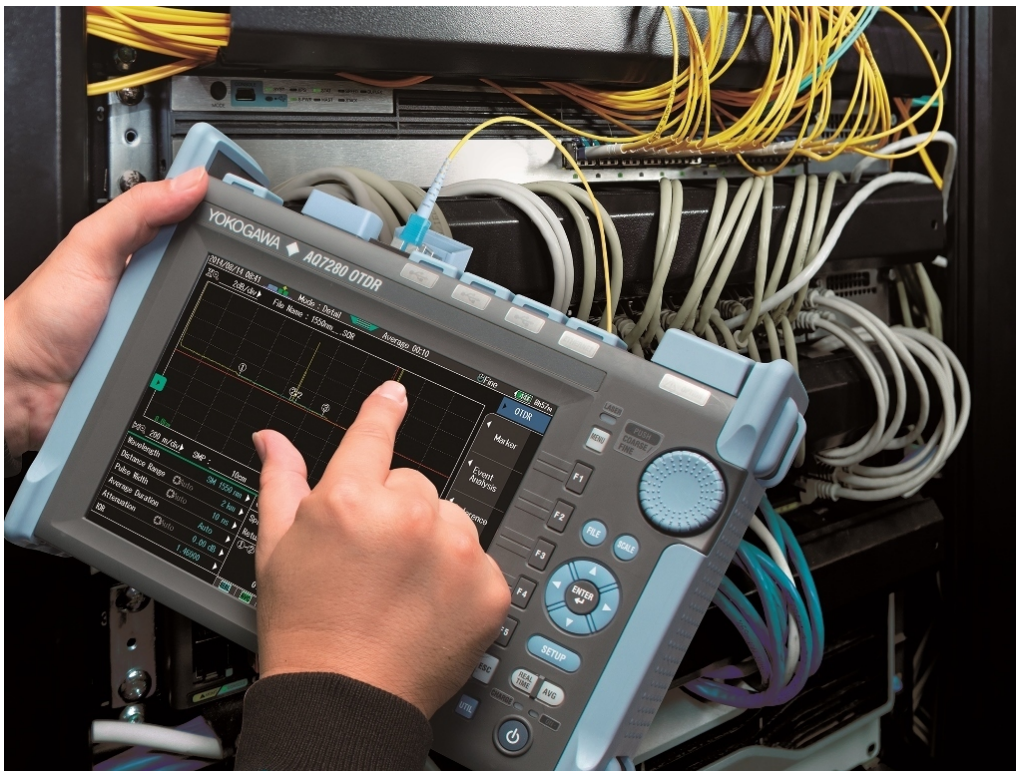
Models	Suffix code	Descriptions
AQ1200A		1310/1550 nm
AQ1200B		1625 nm
AQ1200C		1650 nm
AQ1200E		1310/1550, 1625 nm
AQ1205A		1310/1550 nm, High Dynamic Range
AQ1205E		1310/1550, 1625 nm High Dynamic Range
AQ1205F		1310/1550 nm High Dynamic Range, 1650 nm



AQ7280 OTDRs

The AQ7280 has a 8.4 inch color TFT LCD that supports the same intuitive multi-touch functionality found in smartphones and other handheld devices, allowing users to reposition and resize objects on the screen. The AQ7280 also has the same operation hard keys found on the preceding model. Users can opt to use either the touchscreen or the hard keys.

Nine models suitable for a variety of measurement needs. These include the 50 dB dynamic range model suitable for long distance measurements, the four wavelength in one port model, and several other models. The AQ7280 series offers remarkable flexibility and convenience with modular interchangeable measuring units that can be replaced in the field. The AQ7280 can be modified simply by replacing the measuring unit.



Reliability: Robust design for operating under harsh field conditions. Proven operating system assuring stability, prompt response, and superior protection against software virus attacks.

Ease-Of-Use: Dual operation mode by multi-touch touchscreen and hard-key buttons. Fully automatic measurement and easy-to-read analysis reports through new software applications.

Speed: Lightning startup time. Multi-tasking operation to enhance productivity. Immediate reporting via wireless connectivity.

TEST EQUIPMENT | OTDRs



AQ7280 Specifications OTDR Mainframe

Display	8.4-inch color TFT LCD (Resolution: 800 × 600, Multi-touch capacitive touchscreen)
Electrical interface	Unit interface × 1, Module interface × 1, USB 2.0 × 3 (TYPE A × 2, TYPE B (mini) × 1), Ethernet (10/100BASE-T, Option) × 1, SD card slot × 1
Data storage	Internal storage: ≥1000 waveforms, External storage: USB memory, SD card
Dimensions	Approx. 287 mm (W) × 210 mm (H) × 80 mm (D)
Weight	Approx. 2.2 kg
Battery	Operating time 15 hours (Telcordia GR-196-CORE Issue2 2010), 10 hours (Continuous measurement)

OTDR Units

Model	AQ7282A	AQ7283A	AQ7284A	AQ7285A
Wavelength (nm)	1310/1550			
Distance range (km)	0.2, 0.5, 1, 2, 5, 10, 20, 30, 50, 100, 200, 300, 400, 512			
Pulse width (ns)	3, 10, 20, 30, 50, 100, 200, 300, 500, 1000, 2000, 5000, 10000, 20000			
Event dead zone (Typ.)	0.6 m			0.5 m
Attenuation dead zone (Typ.)	3.5/ 4 m			
Dynamic range (Typ.)	38/ 36 dB	42/ 40 dB	46/ 45 dB	50/ 50 dB
Distance measurement accuracy	$\pm (0.75 \text{ m} + \text{Measurement distance} \times 2 \times 10^{-5} + \text{Sampling resolution})$			
Sampling resolution	Min. 2 cm			
Number of sampling points	Max. 256000			

YOKOGAWA - AQ7280 Models and Pricing

Models	Suffix	Description	Price \$
AQ7280		Main frame	\$2520
Options	/MNT	Monitoring function	1,000
	/SMP	Smart Mapper function	500
	/LAN	Ethernet	500
	/SB	Shoulder Belt	20
AC adapter	NOTE: AC adapter is not included in AQ7280. Please order separately.		
Models		Description	Price \$
739871		AC adapter (for outside the US and EU)*	180
Models		Description	Price \$
AQ7282A		2WL 1310/1550 nm, 38/36 dB	3,850
AQ7283A		2WL 1310/1550 nm, 42/40 dB	4,850
AQ7284A		2WL 1310/1550 nm, 46/45 dB	8,200
AQ7285A		2WL 1310/1550 nm, 50/50 dB	14,200
AQ7283F		3WL 1310/1550, 1650 nm (built-in filter), 42/40, 40 dB	9,100
AQ7283H		3WL 1310/1550/1625 nm, 42/40/39 dB	6,200
AQ7284H		3WL 1310/1550/1625 nm, 46/45/44 dB	9,700
AQ7283K		4WL 1310/1490/1550/1625 nm, 42/38/40/40 dB	9,700
AQ7282M		2WL 850/1300 nm (M M), 25/27 dB	4,850
AQ7280 Options	Suffix	Description	Price \$
Op cal connector	-USC	Universal Adapter (SC)	100
	-UFC	Universal Adapter (FC)	140
	-ULC	Universal Adapter (LC)	195
	-ASC	Universal Adapter (SC Angled-PC)	200
Op ons	-NUA	No Universal adapter	0
	/PC	Power Checker	200
	/SLS	Stabilized Light Source	300

OPM, VLS Modules Pricing

OPM module		Description	Price \$
AQ2780			600
AQ2781		High Power OPM module	1,000
AQ2780V		OPM & VLS module	800
AQ2781V		High Power OPM & VLS module	1,200
AQ4780		VLS module	300
	Suffix		Price \$
Op cal connector	-SCC	Universal Adapter (SC)	0
	-FCC	Universal Adapter (FC)	20
	-LMC	Ferrule Adapter (ø1.25)	100

Shineway Tech MTP-200 Series Hand-held High Performance OTDR

MTP-200 OTDR series have a compact multi-functional platform, which is specially designed for FTTx/WAN applications and can meet all test requirements of installers, contractors and service operators during network installation, construction, maintenance and troubleshooting. It is convenient and accurate for auto/manual testing, multi-wavelength testing and multi-functional analysis.

Optimized Platform Performance

- Lightweight, 2.1kg
- 7 inch touch screen
- High strength protect horn
- Excellent Man-Machine interface for easy operation
- Damp-dust-shock proof
- Multi traces analysis
- Single/multi traces printing in one report
- Batch editing and printing
- Bidirectional traces analysis
- CSV report formats
- Remote control function
- Optimized power management: 10 hours continuous operation
- Fast power up and off with Windows CE
- Direct printing function(compatible with PCL printers)
- Remote/local control by PC

MTP-200-20VC Mini OTDR \$4000

Wavelength ($\pm 20\text{nm}$): 1310/1550nm
Dynamic Range (dB): 38/37dB

EDZ (m) 0.8

ADZ (m) 4.5

With VFL, power meter, laser source & Optical Connector Inspector Module

MTP-200-20VD Long Haul OTDR \$6000

Wavelength ($\pm 20\text{nm}$): 1310/1550nm
Dynamic Range (dB): 45/43dB

EDZ (m) 0.8

ADZ (m) 4.5

With VFL, power meter, laser source & Optical Connector Inspector Module

MTP-200-31VCL Three Wave Length (1625nm on-line test) \$6500

Wavelength ($\pm 20\text{nm}$): 1310/1550/1625
Dynamic Range (dB): 38/38/37

EDZ (m) 0.8

ADZ (m) 4.5

MPT-200 OTDR Standard Package Includes:

MTP-200 Host
Lithium Battery
CD(User Manual + PC Software)
AC adaptor
Carrying Case
Warranty card
Calibration Certificate



MTP-200-40VC SM&MM OTDR \$6000

Wavelength ($\pm 20\text{nm}$): 850/1300/1310/1550
Dynamic Range (dB): 23/36/38/36

EDZ (m) 1

ADZ (m) 5/5/4.5/4.5

With VFL, power meter, laser source & Optical Connector Inspector Module

MTP-200-31VCPL Three Wave Length (1625nm on-line test & PON network) \$7000

Wavelength ($\pm 20\text{nm}$): 1310/1550/1625
Dynamic Range (dB): 42/41/40

EDZ (m) 0.8

ADZ (m) 4.5

PALM Series Handheld OTDRs Most Compact High-Performance OTDR

ShinewayTech® compact palmOTDRs now offer even more testing capacities, flexibility and value with combination of 850/1300/1310/1490/1550/1625/1650nm (Mono/double/triple wavelength) OTDR, 1310/1490/1550nm PON Power Meter, Stabilized Laser Source and VFL.

The OTDR wavelengths cover the applications of regular end-to-end fiber characterization (1310/1550nm), premise/enterprise LAN testing (850/1300nm), FTTx fiber link construction verification (1490nm) and PON live fiber troubleshooting (1625/1650nm with filter). The integrated PON Power Meter can perform in-service testing of all PON signals (1310/1490/1550nm) on any spot of the network featuring pass-through design and burst mode support. palmOTDR is your ultimate solution to meet various testing requirements of entire fiber network.

Handheld palmOTDR Features

- Comprehensive fiber applications, ideal for LAN/
- WAN/FTTx certification & trouble-shooting:
- SM: 1310/1490/1550, 1625/1650nm (with filter), up to 50dB
- MM: 850/1300nm, 21/24dB
- Fault locating, fiber length/loss measurement, connector/
- splice/ splitter/ macro bend/fiber-end detection
- Built-in PON Power Meter for Triple-play live measurement
- Optional Stabilized Laser Source, SM/MM Power
- Meter and VFL (Advanced Version)
- FTTx in-service testing/ Testing through splitter:
- (1625/1650nm with filter)
- Splitter & fiber-end identifiable
- Auto/Manual (2-point/5-point) /Averaging/Real-time test
- Pass/Fail assessment and ORL test function
- Quick start: <5 seconds
- Perfect user interface, handheld & lightweight (1kg)
- Hotkeys: Easiest operation in the world, push-and-test
- 1000 test records storage
- Bellcore file format (.sor)
- PC software for batch data processing
- USB data interface, driver-free
- Multiple languages: EN/DE/IT/FR/ES/PT/RU/KR/VN/
- CN etc.
- 8 hrs continuous operation/20 hrs standby
- Dust-shock proof (2m drop test)
- CE, FCC, FDA certificates



Model	Instrument Description	Specifications				Price Basic / Advanced
		Wavelength (±20nm)	Dynamic range(dB)	E DZ(m)	ADZ(m)	
palmOTDR-S120B	Entry-level SM OTDR	1310/1550	28/28	3.	13	\$1,500 / NA
palmOTDR-M20AE	MM OTDR	850/1300	21/24	1.5	5	\$3,500 / \$3,950
palmOTDR-S20BE	Access OTDR	1310/1550	35/34	1.5	5	\$2,500 / \$2,950
palmOTDR-S20D/N	Long-haul OTDR 1	310/1550	45/43	0.8	4.5	\$5,000 / \$5,450
palmOTDR-S20C/P	PON Construction OTDR	1310/1490/1550	38/37/37	0.8	4.5	\$4,700 / \$5150
palmOTDR-S20C/X	PON OTDR (with filter)	1310/1550/1625	38/37/37	0.8	4.5	\$4,500 / \$4950
palmOTDR-Q240	4 Wavelength QUAD OTDR	850/1310/1310/1550	21/24/32/30	1.5/1.8 5	5	\$6,000 / NA



ODM RP 450, RP 455, RP 460 and UPM Optical Power Meters

Meters measure optical power on fiber optic networks operating at 850nm, 1310nm, 1490 and 1550nm. These easy to use optical power meters provide absolute dBm or dB loss measurements on all optical networks. The RP 450 allows the user to set the incoming signal to a "zero" reference providing direct loss measurements. The RP 455 provides set ref and storage of up to 1000 measurements per wavelength. The RP 460 provides these features plus the ability to transfer data via the mini USB port to a laptop computer. The RP 455 & 460 also allows a "scroll feature" to review field measurements.



Optical Power Meters Models

Model #	Description	Storage	* USB Download	* Streaming Data to PC	2kHz Tone Detect	Wavelength	Range (dBm)	Price
RP 450-02	Germanium,0.01dB,Zero/Set Ref	No			Yes	850/1310/1490/1550nm	+6 to -65dBm	\$299.00
RP 450-03	InGaAs,0.01dB,Zero/Set Ref	No			Yes	850/1310/1490/1550nm	+6 to -75dBm	\$349.00
RP 450-04	Filtered InGaAs,0.01dB,Zero/Set Ref	No			Yes	850/1310/1490/1550nm	+23 to -50dBm	\$399.00
RP 455-02	Germanium,0.01dB,Zero/Set Ref	Yes, 1000 points			Yes	850/1310/1490/1550nm	+6 to -65dBm	\$399.00
RP 455-03	InGaAs, 0.01dB,Zero/Set Ref	Yes, 1000 points			Yes	850/1310/1490/1550nm	+6 to -75dBm	\$449.00
RP 455-04	Filtered InGaAs,0.01dB,Zero/Set Ref	Yes, 1000 points			Yes	850/1310/1490/1550nm	+6 to -65dBm	\$499.00
RP 460-02	Germanium,0.01dB,Zero/Set Ref	Yes, 1000 points			Yes	850/1310/1490/1550nm	+23 to -50dBm	\$499.00
RP 460-03	InGaAs, .01dB,Zero/Set Ref	Yes, 1000 points			Yes	850/1310/1490/1550nm	+23 to -50dBm	\$599.00
RP 460-04	Filtered InGaAs,0.01dB,Zero/Set Ref	Yes, 1000 points			Yes	850/1310/1490/1550nm	+6 to -75dBm	\$549.00
UPM 100-02	USB Germanium,0.01dB,Zero/Set Ref	No	Yes	Yes	Yes	850/1310/1490/1550nm	+6 to -65dBm	\$249.00
UPM 100-03	USB InGaAs, .01dB,Zero/Set Ref	No	Yes	Yes	Yes	50/1310/1490/1550nm	+6 to -75dBm	\$279.00
UPM 100-04	USB Filtered InGaAs,0.01dB,Zero/Set Ref	No	Yes	Yes	Yes	850/1310/1490/1550nm	+23 to -50dBm	\$329.00

Streaming Data to PC and USB Download features include ODM Data Manager Software with dB loss PASS/FAIL criteria analysis



PowerChek OP-1 Optical Power Meter

Applications

Measure power and loss in general and high power applications in long-haul, metro, access and local area networks with wavelengths ranging from 780 to 1625 nm. Use with a Viavi light source to detect modulation frequency and identify individual fibers. Integrate with both FiberChekPRO and FiberChekMOBILE to run tests, export data, provide certification reports and manage acceptance criteria.



SmartClass Fiber OLP-82,-82P

Applications

Measurement of optical power (absolute and relative)
Measurement of optical insertion loss
Inspecting fiber end faces – both patch cord and bulkhead



SmartPocket OMK-34/-35/-38 Optical Test Kits

Applications

The OMK-34 is a dual-wavelength optical test kit with a single-port LED source (OLS-34) and a power meter with a universal push/pull adapter (UPP) interface (OLP-34) for power and loss measurement in singlemode and multimode LAN/WAN and Enterprise.

The OMK-36 is a quad-wavelength optical test kit with a dual-port light source (OLS-36) and a power meter with a UPP interface (OLP-35) for singlemode and multimode power and loss measurement.

The OMK-35 is a dual-wavelength optical test kit with a single-port laser source (OLS-35) and a power meter with a UPP interface (OLP-35) for singlemode power measurement and loss test in access and metro networks.

The OMK-38 is a dual-wavelength optical test kit with a single-port laser source (OLS-35) and a power meter with a UPP interface (OLP-38) for singlemode power and loss measurement especially in high power CATV networks.

Shineway Tech

Optical Power Meter OPM-50B Only \$550

Wavelength:

850/1300/1310/1490/1550/1625nm
Power Range (dBm)-50 ~ +27dBm

OPM-50B Features

- Automatic wavelength identification
- Remote reference value setting
- FTTx applicable
- Internal clock & fiber S/N editable
- Memory of 1000 test records
- Data Transfer to PC via USB
- USB power charging
- No warm-up, quick start
- Backlight
- 70 hours continuous operation
- Pocketsize, lightweight and easy-to-use
- CE FCC certificates



Optical Power Meter OPM-15B Only \$150

Wavelength:

850/1300/1310/1490/1550/1625nm
Power range -70 ~ +10: ±5%
±0.01nW(±0.5dB@850nm)

OPM-15B Features

- Applicable on singlemode/multimode fibers
- Microprocessor & linear amplifier ensure long-time accuracy
- Quick response, no warm-up
- Interchangeable connectors: FC/SC/ST
- Dual-way power supply: 9V alkaline battery/AC adapter
- Pocketsize, lightweight and damp-dust-shock proof
- Power saving: Auto-off setting
- MOD tones detection
- Display Units: dB/dBm/mW/μW/W
- CE, FCC Certificates



TEST EQUIPMENT | LIGHT SOURCES



LED and Laser light sources from ODM, Inc. provide reliable performance for testing and certification of fiber optic networks. LEDs are affordable, easy-to-use, and powerful enough for short-distance communications, while lasers operate at faster speeds with fewer errors for use in long-distance, high-speed transmission systems.



The DLS 350 and DLS 355 Features

- Dual wavelength single output
- DLS 350 Dual LED 850nm, 1300nm Multimode application
- DLS 355 Dual Laser 1310nm, 1550nm Singlemode application 2kHz Tone output
- NIST traceable
- Long battery life
- Rugged, smallest and most affordable

TP 210 / TP 220 / TP 250 Features

- **850nm wavelength TP 210**
- **1310nm wavelength TP 220**
- **1550nm wavelength TP 250**
- Includes built-in 2kHz tone generator
- Compact, light weight, pocket size
- Rugged custom design for field or laboratory use

Model #	Description	Tone Output	Output Power	Connector Output	Price
TP 210	850nm LED Source	2 kHz	- 20 dBm	ST or SC	\$159.00
TP 220	1310nm Laser Source	2 kHz	- 4 dBm	SC	\$249.00
TP 250	1550nm Laser Source	2 kHz	- 4 dBm	SC	\$699.00
DLS 350	850nm/1300nm Dual LED	2 kHz	- 20 dBm	SC (universal adapter design)	\$399.00
DLS 355	1310nm/1550nm Dual Laser	2 kHz	- 4 dBm	SC (universal adapter design)	\$749.00
DLS 360	1490nm/1625nm Dual laser	2 kHz	- 4 dBm	SC (universal adapter design)	\$1250.00

Shineway Tech

SLS Series Light Sources

SLS-2X series Stabilized Laser Source paired with ShinewayTech optical power meters can meet the test requirements of fiber identification, attenuation/loss measurements, continuity verification and transmission quality evaluation on singlemode and multimode fibers in LAN/WAN/CATV systems, offering high quality, stability and competitive costs.

Optical Light Sources Features

- Applicable on singlemode/multimode fibers
- Unique Output Power Display
- CW/MOD tones output
- Quick response, no warm-up
- Interchangeable connectors: FC/SC/ST
- 9V alkaline battery/AC adapter
- Power saving: Auto-off setting
- Pocketsize, lightweight and damp-dust-shock proof
- CE, FCC, FDA certificates



Light Source SLS-21A-07

Dual wavelength LS (SM)1310,1550nm, ≥ -7 dBm, Output Power ≥ -7

\$240.00

Light Source SLS-21A-00

Dual wavelength LS (SM)1310,1550nm, ≥ 0 dBm, Output Power ≥ -0

\$330.00

SLS-50P Laser Source

SLS-50 can generate highly stable optical signals at multiple wavelengths to precisely measure optical link loss and identify optical fiber paired with ShinewayTech OPM-50 Intelligent Optical Power Meter.

Wavelength

(± 20 nm): 1310,1490,1550nm, ≥ -3 dBm
Spectrum Width: ≤ 5 nm

SLS-50 Light Source Features

6dB adjustable power output range
Automatic wavelength identification/switch
Remote reference value setting
FTTx applicable
USB power charging
No warm-up, quick start
Backlight
Over 40 hours continuous operation
Pocketsize, lightweight and easy-to-use
CE, FCC, FDA certificates





DI-1000 Fiber Optic Video Microscope Probe

DI-1000 is Lightel's all digital video microscope probe. The DI-1000 connects directly to your PC through the computer's USB2.0 port. Featuring easy single finger focusing, a built-in image freeze/capture button, and detectable resolution to 0.5μm, the DI-1000 package includes our free ConnectorView® (standard) software, providing digital zoom, image display, image capture, auto-calibration and basic analysis tools.

DI-1000 Features:

- Fast, easy focus
- One hand operation
- Inspect patchcords (male) and in-adaptor connectors (female) -
- Direct USB2.0 connection to PC
- Powered by USB connection
- Built-in freeze/capture button
- Slim ergonomic design
- Rapid tip change
- Comprehensive line of tips
- Free image capture and software included
- Digital zoom - Pass/Fail analytical software option available

\$850.00



ODM Video Inspection Probe and Monitor Test Kits



The VIS 300 advances field connector inspection by a unique focus system, which virtually eliminates the need to place the user's hand in the same position each time for effective focus control.

To inspect the backplane connector, the user simply inserts the probe into the connector adapter and turns the entire probe ¼ to ½ turns for complete focus range. Users no longer need to keep one hand on the focus wheel.

The VIS 300 includes a bright 3.5-inch LCD display and precision optics to provide an unmatched field of view of 630μm by 440μm.



Model	# Description	Price
VIS 300 P	VIS 300 Probe	\$ 750.00
VIS 300 MP	VIS 300 monitor & probe, SC bulkhead & 2.5mm universal adapter tips, charger, cleaning kit & case	\$1495.00
VIS 300-USB	VIS 300 Monitor w / USB option and Probe, SC bulkhead and 2.5mm universal adapter tips, battery charger, basic cleaning kit, hard carry case and VIS Image Manager Analysis Software	\$1795.00
VIS 400-HDP	VIS 400 Probe w/USB or WiFi connectivity (with PA 250) Automatic PASS/FAIL analysis to IEC 61300-3-35 with ODM InSpec™ Software, 2.5mm/1.25mm, LC/SC adapter tips	\$1595.00
PA 250	Portable Access Device – Allows wireless use of VIS 400-HDP or UPM 100 includes Device, Charger & Carry Case	\$695.00



FI-60 Live Fiber Identifier - Only \$846

The Viavi/JDSU FI-60 LFI enables users to easily detect the optical signal without disconnecting fiber or disrupting network traffic. The FI-60 LFI also includes the unique Viavi SafeChek™ system, which ensures safe and repeatable engagement with most fiber types without the hassle of changing out costly dies. The FI-60 also converts to an Optical Power Meter (OPM), providing twice the value for your investment and reducing the number of tools carried on the job.

Applications

Easily detect the optical signal without having to disconnect the fiber.
Installation, service, maintenance, or troubleshooting
Integrate with FiberChek2 for combined inspection and test reporting.

Key Features

SafeChek easy-pull trigger system ensures repeatable engagement with fiber cable
LFI head accepts multiple cable diameters (250µm to 3mm jacketed fibers)
Durable metal input adapters (2.5 and 1.25mm) for OPM
Measure both absolute (dBm) and relative (dB) power
Store and recall up to 100 OPM readings



Shineway Tech OFI-20A Optical Fiber Identifier



The OFI-20A Optical Fiber Identifier

The Shineway OFI-20A can detect optical signal presence, type and direction anywhere on fibers during optical network deployment, maintenance and troubleshooting. With non-destructive macro-bend detection technology, it introduces no damage to tested fiber or interference to the service fiber. OFI-20A is able to identify wide-spectrum signals (such as signals in CATV system) and can be used in SONET/SDH & DWDM systems tests.

\$500.00

OFI-20A Features

- Non-destructive detection
- Indication of signal presence, strength and direction
- CW/MOD tones detection
- Buzzer indication
- Handheld & sturdy
- CE, FCC certificates



LIGHTEL's Fiber Scopes CI-1000/ CI-1100

Our Connector Inspector products (CI-1000 and CI-1100) are portable video microscopes for inspecting fiber optic connector end face contamination. With a hand-held probe design inspection of both patchcords and difficult to reach in-adapter connectors becomes simple.



LIGHTEL's CI-1000 portable video microscope for inspecting fiber optic connector end face contamination is available in packages with a 3.5" LCD monitor, a USB2.0 adapter or both. Lightel's free ConnectorView image capture software is included with any USB2.0 device. (Uses Series 1 tips)

\$995.00



LIGHTEL's CI-1100 portable video microscope for inspecting fiber optic connector end face contamination package includes a 3.5" LCD monitor, a charger/adapter and carrying case. An optional USB adapter is available for display and capture of images on your PC. An IR filter is another available option. (Uses Series 2 tips)

\$995.00

Tips for the CI-1000 and CI-1100 probes

Starting at \$30

**We offer financing
through**

Direct Capital

**To learn more call
877-287-7535**

DIRECTCAPITAL

**Equipment
Financing
Available**

Fast & Hassle-Free



ODM Optical Test Kits



TTK 500	VIS 300 Connector Inspection Monitor/Probe, DLS 350/DLS 355, RP 460-02, CR2 Battery Kit, LC/SC multimode and single mode reference cables, LC connector adapters, VIS Image Manager PASS/FAIL Software, Hard Carry Case, Cleaning Kit for 1000 connector cleanings .	01 dB	Yes, 1000 locations /	60 dB	\$3795.00
TTK 800	VIS 400 Connector Inspection Monitor/Probe, DLS 350/DLS 355, RP 460-02, CR2 Battery Kit, LC/SC multimode and single mode reference cables, LC connector adapters, VIS Image Manager PASS/FAIL Software, (IEC 61300 Standard), Hard Carry Case, Cleaning Kit for 1000 connector cleanings .	01 dB	Yes, 1000 locations /	60 dB	\$3995.00
TTK 910	VIS 400 HDP USB Connector Inspection Probe w/PA 250 PortableAccess Device, SC, LC, 1.25mm & 2.5mm Adapters, and InSpecTM software for Windows OS or Mobile Android OS	Pass/Fail IEC 61300-3-3 Ed. 1.0	Windows OS 5Android OS WiFi 802.11G		\$2195.00
TTK 920	VIS 400 HDP USB Connector Inspection Probe w/PA 250 PortableAccess Device, SC, LC, 1.25mm & 2.5mm Adapters, and InSpecTM software for Windows OS or Mobile Android OS and WiFi Enabled Android Tablet	Pass/Fail IEC 61300-3-3 Ed. 1.0	Windows OS 5Android OS WiFi 802.11G		\$2595.00
TKS 850	Dual 1310/1550nm Single Mode, DLS 355 and RP 460-02	.01 dB	Yes, 1000 locations /	60 dB	\$1249.00
TKMS 860	Dual 850/1300nm, Multimode, Dual 1310/1550nm, Single Mode, DLS 350/DLS 355 and RP 460-02	.01 dB	Yes, 1000 locations /	40 dB Multimode 60 dB Single mode	\$1649.00

Shineway Tech OLT-20 Series Optical Loss Tester



OLT-20 Optical Loss Tester integrates laser source module and power meter module in one set, which can perform power testing and link loss testing in optic fiber network conveniently. The typical applications include fiber identification, attenuation and loss measurement, continuity verification and fiber link transmission quality evaluation for installation, routine inspection and daily maintenance of MAN, WAN and CATV systems as well as for lab test and research work.

OLT-20A Only \$360

Wavelength ($\pm 20\text{nm}$): 1310/1550
 Output Power: $\geq -7\text{dBm}$
 Spectral Width: $\leq 5\text{nm}$
 Emitter Type: FP-LD
 Stability:
 $\pm 0.05\text{ dB}/15\text{min}$; $\pm 0.10\text{ dB}/8\text{hr}@1310/1550\text{nm}$
 $\pm 0.15\text{ dB}/8\text{hr}@850/1300\text{nm}$
 MOD Frequencies: 270, 1K, 2K Hz
 Connector Type: FC/PC (Interchangeable ST, SC)

OLT-20C Only \$400

Wavelength ($\pm 20\text{nm}$): 1310/1550
 Output Power: $\geq -7\text{dBm}$
 Spectral Width: $\leq 5\text{nm}$
 Emitter Type: FP-LD
 Stability:
 $\pm 0.05\text{ dB}/15\text{min}$; $\pm 0.10\text{ dB}/8\text{hr}@1310/1550\text{nm}$
 $\pm 0.15\text{ dB}/8\text{hr}@850/1300\text{nm}$
 MOD Frequencies: 270, 1K, 2K Hz
 Connector Type: FC/PC (Interchangeable ST, SC)

OLT-20B Only \$390

Wavelength ($\pm 20\text{nm}$): 850/1300
 Output Power: $\geq -7\text{dBm}$
 Spectral Width: $\leq 5\text{nm}$
 Emitter Type: FP-LD
 Stability:
 $\pm 0.05\text{ dB}/15\text{min}$; $\pm 0.10\text{ dB}/8\text{hr}@1310/1550\text{nm}$
 $\pm 0.15\text{ dB}/8\text{hr}@850/1300\text{nm}$
 MOD Frequencies: 270, 1K, 2K Hz
 Connector Type: FC/PC (Interchangeable ST, SC)

OLT-20D Only \$420

Wavelength ($\pm 20\text{nm}$): 850/1300
 Output Power: $\geq -7\text{dBm}$
 Spectral Width: $\leq 5\text{nm}$
 Emitter Type: FP-LD
 Stability:
 $\pm 0.05\text{ dB}/15\text{min}$; $\pm 0.10\text{ dB}/8\text{hr}@1310/1550\text{nm}$
 $\pm 0.15\text{ dB}/8\text{hr}@850/1300\text{nm}$
 MOD Frequencies: 270, 1K, 2K Hz
 Connector Type: FC/PC (Interchangeable ST, SC)



Viavi FFL-100 VFL



Vavi FFL-50 Mini VFL

Viavi FFL-100

Ruggedized Visual Fault Locator, with 2.5 mm Fixed Connector and 1.25 mm Adapter

The FFL-100 VFL is economically priced and ergonomically designed comfortable handling and portability. The FFL-100 is equipped with a 2.5 mm interface and is compatible with connectors such as SC, ST, and FC, while the 1.25 mm adapter enables connection to LC and MU connectors. The VFL emits a bright red laser beam (Class II), making the light escaping from the damaged fiber easily visible from a distance. The Continuous/Flash control button lets operators choose between continuous or flashing illumination.

Viavi FFL-050

Mini Visual Fault Locator, with 2.5mm connector

The FFL-050 VFL is economically priced and ergonomically designed comfortable handling and portability. The FFL-050 is equipped with a 2.5 mm interface and is compatible with connectors such as SC, ST, and FC, while the optional 1.25 mm adapter enables connection to LC and MU connectors. The VFL emits a bright red laser beam (Class II), making the light escaping from the damaged fiber easily visible from a distance. The Continuous/Flash control button lets operators choose between continuous or flashing illumination.

Compact, ergonomic design ultimate portability
Visible wavelength is 650 nm
High powered laser (1 mW) single-mode (> 7 km) and multi-mode (> 5 km) connectors
Continuous or Flash illumination
Universal connector interface quick and easy connection
2.5 mm connector input (1.25 mm adapter optional)
Includes soft-sided carrying case with belt loop

Compact, ergonomic design ultimate portability
Visible wavelength is 650 nm
High powered laser (1 mW) single-mode (> 7 km) and multi-mode (> 5 km) connectors
Continuous or Flash illumination
Universal connector interface quick and easy connection
2.5 mm connector input (1.25 mm adapter available)
Includes soft-sided carrying case with belt loop
Uses two AA batteries (included) with 80+ hours continuous power
Professional-grade with universal 1.25 mm adapter included

OTDR Launch Boxes



Dead Zone Eliminator® OTDR Launch Box Fiber Optic Launch Box Series 3: Round compact unit with leads

The NEW DZE™ Series 3 OTDR Launch/Receive Cable is designed to aid in the testing of fiber optic cable when using an OTDR to help minimize the effects of the OTDR's launch pulse on measurement uncertainty. The light weight unit measures only 6" in diameter and 1.25" high, includes a carabiner clip allowing the unit to be easily attached to belts, equipment straps and rack mounts. Available in lengths of 150, 300, 500 and 1000 meters.

Dead Zone Eliminator® OTDR Launch Box Fiber Optic Launch Box / Series 4: Handheld Module with leads & protective cover

Designed to aid in the testing of fiber optic cable when using an OTDR. The Dead Zone Eliminator (DZE) is used with Optical Time Domain Reflectometers (OTDR's) to help minimize the effects of the OTDR's launch pulse on measurement uncertainty. Unit measures only 4.95"x4.9"x2", includes 2 meter leads and features a hinged magnetic protective cover. Protective cover can be close when leads are extended.



All Launch Box Pricing are Subject to Configurations Please see the Part Number Table Below and Call 877-287-7535 for Pricing

Part Number Table: Please use the following connector and fiber codes when ordering.

Part Number Layout: D3 or D4 [Connector 1] [Connector 2] - [Fiber Type] [Length in meters]

Connector Code Connector Style		Fiber Code	Fiber Type
1	FC/UPC	S	Singlemode 9/125
2	ST/UPC	M	Multimode 62.5/125
3	SC/UPC	B	Multimode 50/125 OM2
4	FC/APC	C	Multimode 50/125 OM3
5	SC/APC		
7	LC/UPC		



OTDR Launch Boxes

Testing bare fiber just got a lot easier and faster. The Divot® Bare Fiber Adapter (Tester) accepts cleaved and non-cleaved fiber, requires only 3/4" of bare fiber exposed and has a typical insertion loss of less than 0.5 dB when using cleaved fiber. No messy gel applicators or reservoirs to fill. Simply strip your fiber and insert.



Available Cable Packages

SINGLEMODE 9/125
MULTIMODE 62.5
MULTIMODE 50/125 OM2

Dead Zone Eliminator® OTDR Launch Box Fiber Optic Launch Box Series 5: Rugged Carry Case with leads

Specifications

Fiber Types	Singlemode 9/125um, Multimode 62.5/125um or Multimode 50/125um
Cable length	1 Meter
Connector Styles	FC, ST®, SC, FC/APC, SC/APC, LC
Number of insertions (Typical)	3000 min. (500 min. per cartridge, 6 cartridges included)
Insertion loss (Typical)	<0.5 dB (with cleaved fiber. uncleaved fiber <0.8dB)
Back Reflection (Typical)	<45 dB
Case Dimensions	8" [L] x 6" [W] x 2.25" [H]
Operating temp.	-10° to +40° C
Weight	7.4 oz.



The Dead Zone Eliminator is also available in a rugged light-weight carry case. The case measures only 8.7"x7.4"x3.8", weighs less than 2 lbs. and can hold up to 6,000 Meters of fiber. The case is watertight, airtight, dustproof and crushproof.

All Launch Box Pricing are Subject to Configurations Please Call 877-287-7535 for Pricing



INNO TS-8⁺ Thermal Stripper

TS-8⁺ is INNO Instrument's newly developed hand-held type thermal stripper installed with a heater to strip the jacket of ribbon cable up to 12 fibers. With this unmatched device, extreme convenience for use in the FTTx field and under tough environment is ensured.

Features/Benefits:

Dedicated stripper for ribbon fiber cable

Hand-held type stripper

World's fastest heating time of 4 sec

Long lasting battery:
Approx. 500 times with a fully charged battery

Simple operation

TS-8 is developed as a dedicated stripper mainly for ribbon cable with thermal heater. With its simple and fast operation, anyone can do clear stripping with near-zero failure. It is a very stable tool with lightweight material and compact design. With easy hand operation, it provides long lasting battery capacity: approximately 500 times of ribbon fiber cable stripping.



Package includes:

TS-8 Thermal Stripper

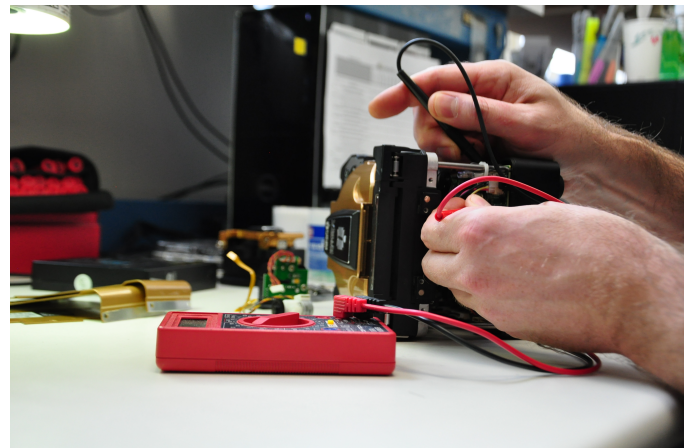
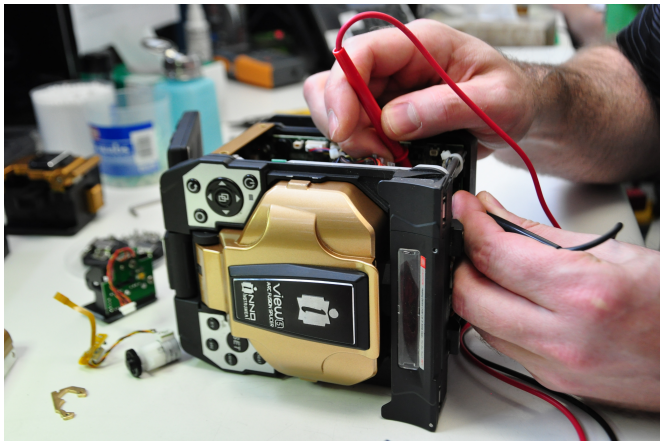
LBT-8 Internal Battery

AR-8 Power Adapter

Fusion Splicer Service Center

With in-house technicians in FORC delivers prompt and responsive services. We have a broad range of expertise on the most popular equipment saving you time, money and the inconvenience of sending your test and measurement equipment to multiple OEMs.

If you have any questions please call 877-287-7535.



Jonard Thermal Strippers



Thermo-mechanically remove coatings from optical fibers. The Fixed Blade model supports standard 125 μ m optical fibers, including 250 μ m, 400 μ m, and 900 μ m coated fibers. The Adjustable Blade model supports cladding diameters 40 μ m to 1000 μ m acrylate coated fibers with buffer diameters up to 1200 μ m.



Jonard TSAB-40 with Adjustable Blade

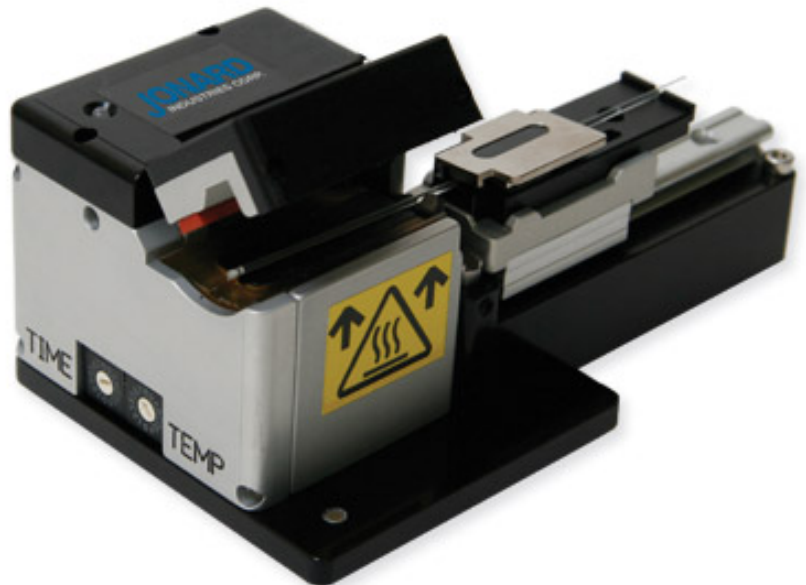
Our TSAB-40 Adjustable Thermal Stripper supports optical fibers with cladding diameters from 40 μ m to 1000 μ m, with buffer diameters up to 1200 μ m. This includes standard 250 μ m, 400 μ m, and 900 μ m coated fibers. Adjustable temperature and time settings allow it to adapt to stripping a variety of different acrylate coatings and cladding sizes.

\$2,220.00

Jonard TSFB-125

Our TSFB-125 Fixed Blade Thermal Stripper supports standard 125 μ m optical fibers, including 250 μ m, 400 μ m, and 900 μ m coated fibers. Adjustable temperature and time settings allow it to adapt to stripping a variety of different coatings. The precision, self-centering blade design produces high strength stripping performance unmatched by previous flat blade strippers.

\$2,030.00





Jonard JIC-125 Ergonomic Fiber Optic Stripper The Fiber Optic Stripper is used for stripping 250 micron buffer coating from 125 micron optical fiber.

\$22.65



Jonard JIC-175 Ergonomic Fiber Optic Stripper Used for stripping the 250 micron coating from the 125 micron optical fiber.

\$23.15



Jonard JIC-375 Three Hole Fiber Optic Wire/Cable Stripper Three hole Fiber Optic Stripper model performs all common fiber stripping functions.

\$24.00



Jonard JIC-186 Ergonomic Fiber Optic Kevlar® Cutter High carbon stainless steel blades designed to cut Kevlar®, cabling insulation, tape, cable ties and other material.

\$13.25



TK-400 Splicer's Kit

This compact kit contains a special purpose ergonomic cable splicer's knife, scissor and leather pouch. The knife features a short 1 3/4" tough, cutlery-steel blade and a non-slip handle. The scissors are made of high carbon steel with scraper and file on one side plus 2 stripping notches. Both items fit securely in the leather pouch which can be mounted on belts up to 2" wide.

\$27.25



TK-375 Fiber Stripper & Scissor Kit includes the JIC-375 Fiber Optic Stripper, ES-1964 Electrician's Scissor, and convenient molded plastic pouch (with belt loop).

\$43.35



FOD-2000 Fiber Optic Drop Cable Slitter is a patented tool that simplifies the slitting of drop cable jackets at the end of the cable or mid-span and was developed specifically for FTTH technicians working with flat fiber drop cables. For flat cables, where the width is .305"-.350" and the height is .155"-.185".

\$43.65

Jonard TK-160 Tool & Fiber Prep Kit -\$562



The TK-160 Fiber Prep Kit with FCC & VFL (includes the FCC-125 & FCC-250 Fiber Connector Cleaners 1.25mm & 2.5mm and the Visual Fault Locator Kit). This fiber preparation kit provides you with all of the tools needed to access and prepare a fiber optic cable for termination.



The TK-120 Fiber Prep Kit provides an array of tools needed to access and prepare a fiber optic cable for termination. The kit includes: JIC-375 Fiber Optic Stripper Three Hole JIC-186 Wire & Kevlar Cutter, use for prepping the fiber for termination CSR-1575 Cable Strip & Ring and so much more.

Jonard TK-186 Fiber Connector Cleaning Kit - \$247.55

The Jonard TK-186 fiber connector cleaning kit includes a 1.25mm and 2.5mm fiber connector cleaners, 50 pre-moistened fiber wipes, a fiber connector insertion and removal tool and a flashlight packaged in a handy and rugged tool pouch. The tool pouch provides 21 pockets both inside the case and outside for storage of fittings tools and other items. This kit is a must have for any fiber optic technician.



Jonard TK-188 - Fiber Connector Cleaning & Inspection Kit - \$432.05



The Jonard TK-188 Fiber Connector Cleaning & Inspection Kit provides all the tools needed for cleaning and inspection of fiber connector end faces. Includes 1.25mm, 2.5mm and universal fiber connector cleaners, 50 pre-moistened fiber wipes, a fiber connector insertion and removal tool, 200x inspection microscope and a flashlight in a handy and rugged tool pouch.



US Conec IBC™ Brand Cleaners

IBC™ Cleaner LC 9393 - \$63.50

Cleans LC and MU connectors with a UPC and APC polish

Easy pushing motion engages connector and initiates cleaning

Disposable with 525+ cleaning's per unit

Made from antistatic resins

Cleaning micro fibers are densely stranded and debris free

Cleaning system rotates 180° for a full sweep

Audible click when engaged



IBC™ Cleaner SC 93932 - \$63.50

Cleans SC, ST, FC, and E2000 connectors

Easy pushing motion engages connector and initiates cleaning

Disposable with 525+ cleaning's per unit

Made from antistatic resins

Cleaning micro fibers are densely stranded and debris free

Cleaning system rotates 180° for a full sweep

Audible click when engaged



**Volume discounts available. Please call
877-287-7535 for more information.**

Upgrade Your Fiber Cleaner with American Polywater

AquaKleen™ Water-based Fiber Optic Endface Cleaner is a brand new solution to the problem of cleaning fiber.

AquaKleen™ is a special blend of 94% pure deionized water with cleaning solvents. AquaKleen™ Cleaner is friendly to the environment, less toxic, and safer for use by humans.

FiberKleen™ towelette dispenser contains 175 lint-free, high-quality microfiber towels that are used to clean ferrules, bulkheads and fiber endfaces.

The engineered design of the nonwoven, highly absorbent towel traps the dirt and debris re-moved from ferrules, making cleaning easier and more effective. Variety of swabs also available.

Water-based
Less toxic
Eco-friendly
94% pure deionized water
Convenient packaging
Non-hazardous for air shipment
Meets Telcordia specification
GR-2923-CORE
"Generic Requirements for Fiber Optic
Connector Cleaning Products."



Polywater Cleaning Kits



Polywater AQ-Kit2 - w Finger Sprayer

\$109.76

Contains:

- 2 AQ-2LP
- 1 DT-D175
- 1 FC-HOLDER
- 1 SWB-250F100

Polywater AQ-KIT3 - with Dropper Bottles

Contains:

- 2 AQ-2DR
- 1 DT-D175
- 1 FC-Holder
- 1 SWB-250F100

Polywater QC-Kit2

\$109.76

Quickleen™ Type QC -2

Fiber Cleaning Kit

- 2 QC-2LP
- 1 DT-D175
- 1 SWB-250F100
- 1 FC- Holder



Grime-Away Multi-Purpose Cleaning Wipes

Heavy duty towelettes feature a textured side to quickly remove greases and safe for cleaning hands that contact insulated gloves. Moisturized for your hands.

HTC-1 Individual pre-moistened Wipe foil pack

\$1.50

HTC-D72 Dispenser with 72 10 X 12 pre-moistened wipes

\$17.80

Microfiber Towels & Holder- high absorbency, non-linting, non-fraying ultra-clean material.



DT-D175

175 microfiber towels in a plastic dispenser pack with cleaning pad

\$39.99

FC-HOLDER

Dual towel holder with 20 slots for precision we-dry cleaning.

\$7.00

DT-D175H

Towel Kit 1-DT-D175 & 1-FC-HOLDER

\$42.50

Polywater Lubricants / Wipes

Prelube 2000 Cable Blowing Lubricant developed for fiber optic cable blowing or pushing. Reduces frictional drag during blown installation, recommended by several blowing machine manufacturers.

Prelube 2000 Winter Grade Cable Blowing Lubricant (-20° F to 140°)

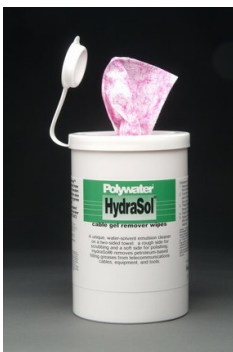


P-35	1 Qt Squeeze bottle	\$13.55
P-128	1 Gallon Pail	\$46.20
P-640	5 Gallon Pail	\$173.84
WP-35	1 Qt Squeeze bottle	\$17.31
WP-128	1 Gallon Pail	\$55.29
WP-640	5 Gallon Pail	\$225.30



FTTx Communications Lubricant high performance, liquid cable pulling lubricant esigned specifically for communications cable installations. Lubricant FTTx is highly concentrated and works with only a thin coating.

FTTx-35LR	1 Qt spray bottle	\$13.92
FTTx-D20	20 ct wipe canister	\$21.32



Hydrasol Cleaners

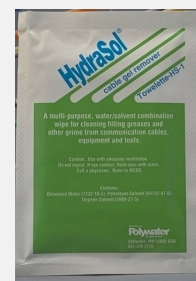
For cleaning the cable gels off buffer tubes, tools, and work surfaces

HS-D72	Hydrasol wipe / 72 Count	\$38.51
---------------	--------------------------	----------------

HS-1	Grime Away Wipes	\$1.66
-------------	------------------	---------------

Type FO iso alcohol - For cleaning glass fiber or connector end faces for better light transmission performance

FO-1	Type FO iso alcohol wipe	\$0.56
FO-2LP	2 oz refillable FO iso	\$10.89





Polywater Cleaning Solutions

SqueakyKleen fiber optic cable cleaner and specially designed high-performance towelette work to remove dirt from the entire surface of loose tube or ribbon fibers, leaving no residue.



TC-1 SqueakyKleen saturated wipe foil pack	\$1.61
TC-16LF 16 Oz SqueakyKleen with flip top cap	\$11.04
TC-35LF 1 Qt SqueakyKleen with flip top cap	\$13.78



QuickKleen Fast Drying fiber optic endface cleaner ferrules and bulk head cleaner.
Evaporates quickly, no residue, dissipates static, non-flammable and easy to transport.

QC-2LP 2 Oz QuickKleen Finger Sprayer	\$10.89
--	----------------

AquaKleen Non-Toxic Eco Friendly fiber optic endface cleaner, ferrules and bulk head cleaner, water based and dissipates static.



AQ-2DR 2 Oz Dropper Bottle	\$10.89
AQ-2LP 2 Oz AquaKleen Finger Sprayer	\$10.89
AQ-WETDRY1 AquaKleen Saturated Wipe and Dry Towel Tandem Pack	\$1.70

Volume Discounts
The More You Buy
The More You Save!



Polywater Lubricants

Polywater F Communications Lubricant is a high performance, pourable liquid, cable pulling lubricant recommended for pulling underground fiber optic and coaxial cable.

Polywater F Winter Grade Communications Lubricant (-20° F to 140°)



F-35	1 Qt squeeze bottle	\$8.38
F-128	1 Gallon Jug	\$18.61
F-320	2 1/2 Gallon Jug	\$40.58
F-640	5 Gallon Pail	\$72.27
WF-128	1 Gallon Jug	\$27.39
WF-320	2 1/2 Gallon Jug	\$59.71
WF-640	5 Gallon Pail	\$106.28

Polywater J Gel Cable pulling lubricant proven in the installation of millions of feet of cable over 20 years.

Polywater J Gel Winter Grade Cable pulling lubricant (-20° F to 140°)



J-35	1 Qt squeeze bottle	\$7.54
J-128	1 Gallon Pail	\$18.76
J-640	5 Gallon Pail	\$70.88
WJ-35	1 Qt squeeze bottle	\$11.35
WJ-128	1 Gallon Pail	\$28.66
WJ-640	5 Gallon Pail	\$108.27



**FiberOptic Resale Corp
21 Technology Way
Suite 4ES
Nashua, NH 03060**

www.fiberopticresale.com

877-287-7535 | sales@fiberopticresale.com